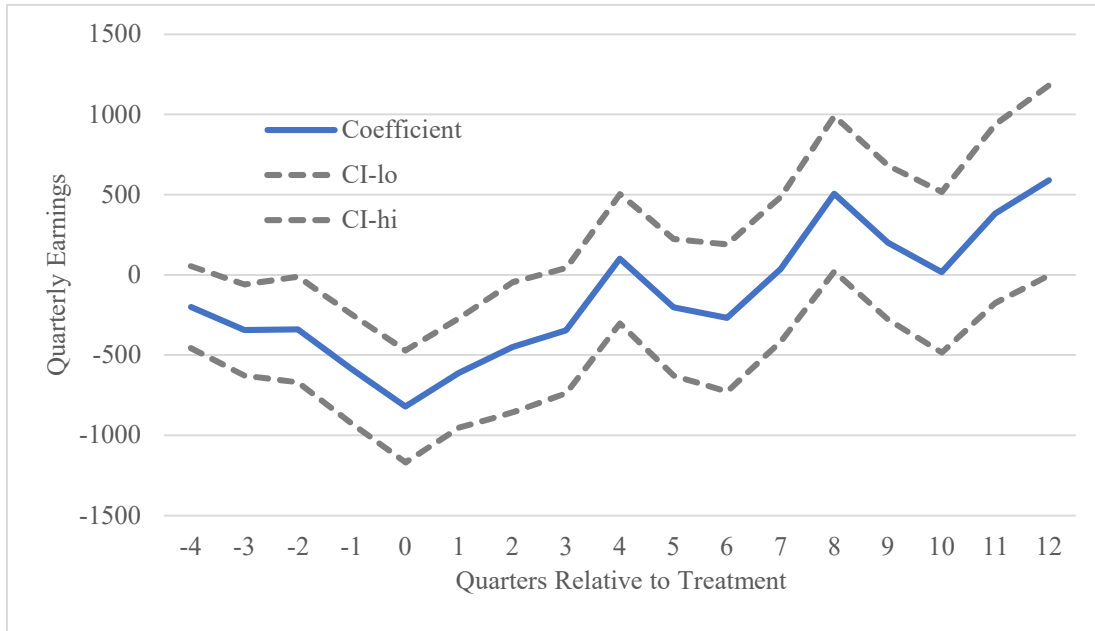
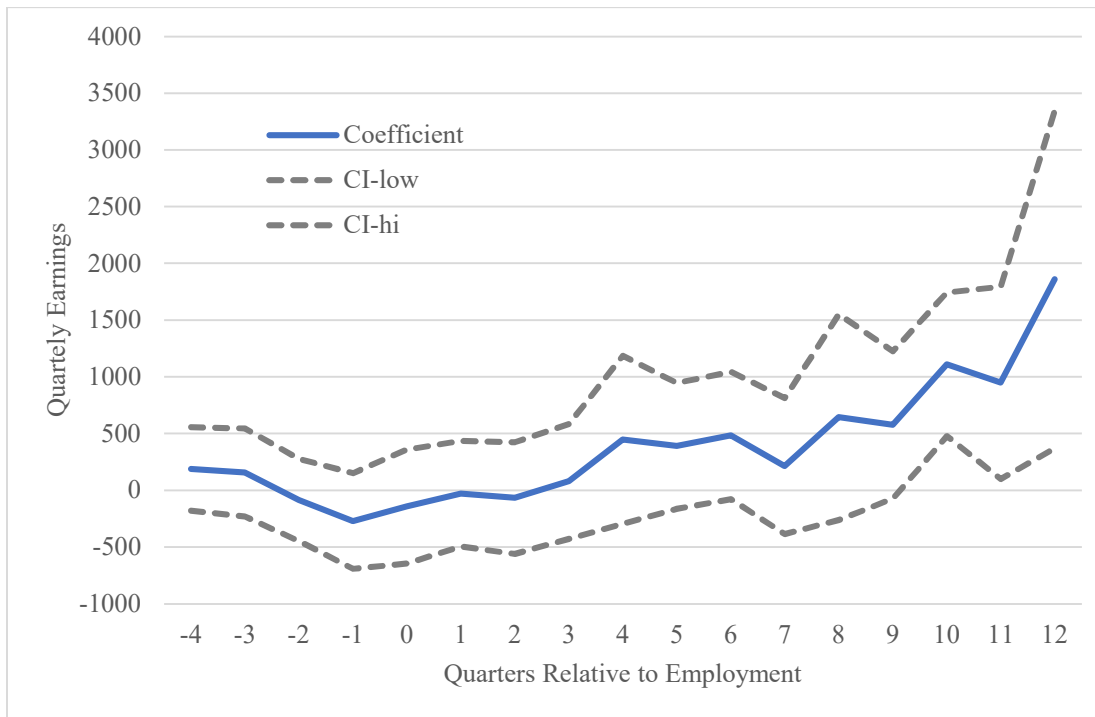


Appendix Figure 1: Effect of Treatment on Quarterly Earnings by Quarter, Estimation of Equation 1, All Enrolled Participants

Panel A-Men

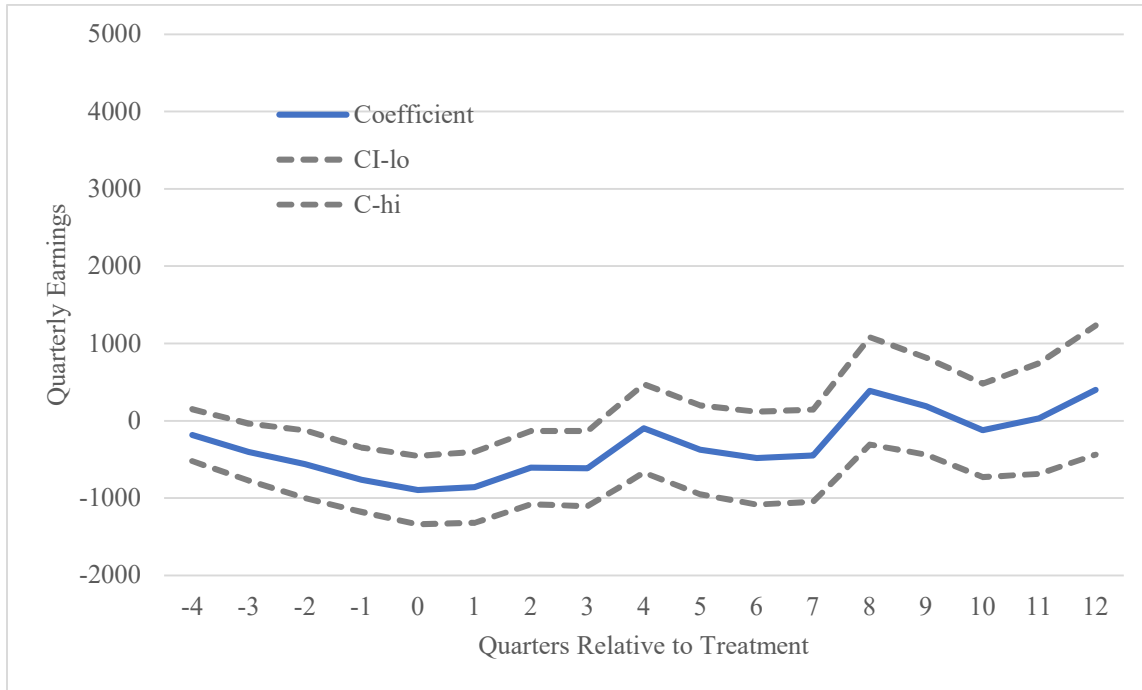


Panel B-Women

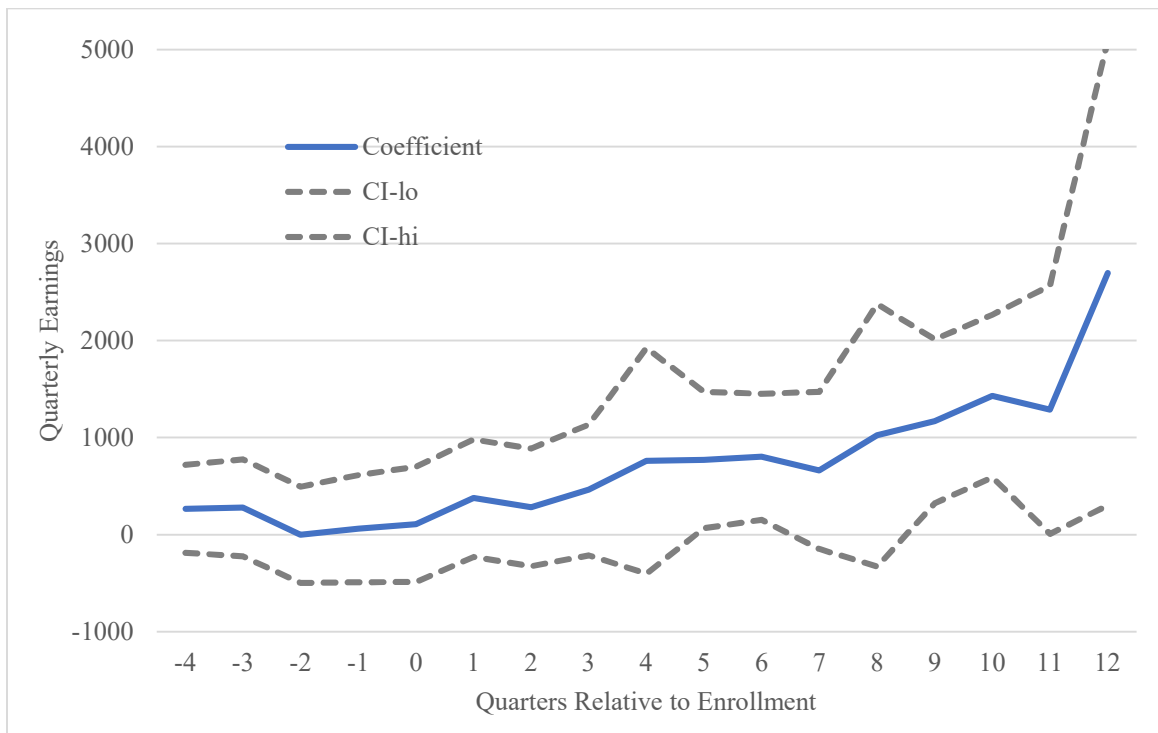


Appendix Figure 2: Effect of Treatment on Quarterly Earnings by Quarter, Estimation of Equation 1, Participants Completing At Least One Module

Panel A-Men



Panel B-Women

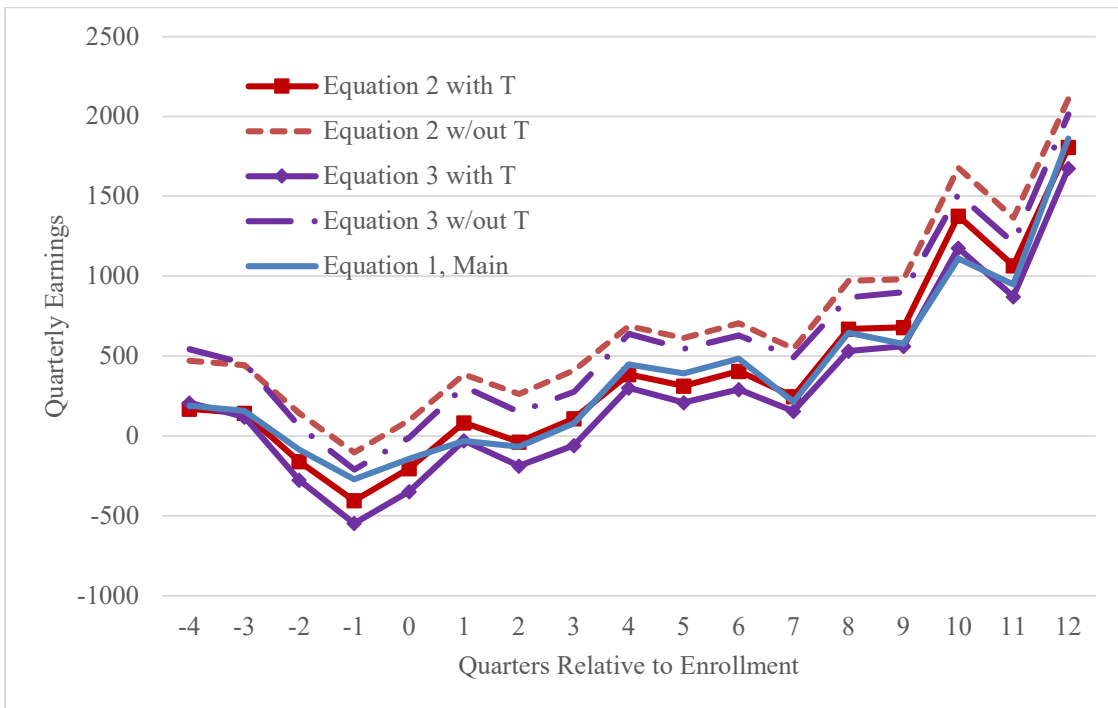


Appendix Figure 3: Estimated Effects of Treatment on Quarterly Earnings by Quarter Across Different Model Specification, All Enrolled Participants

Panel A-Men

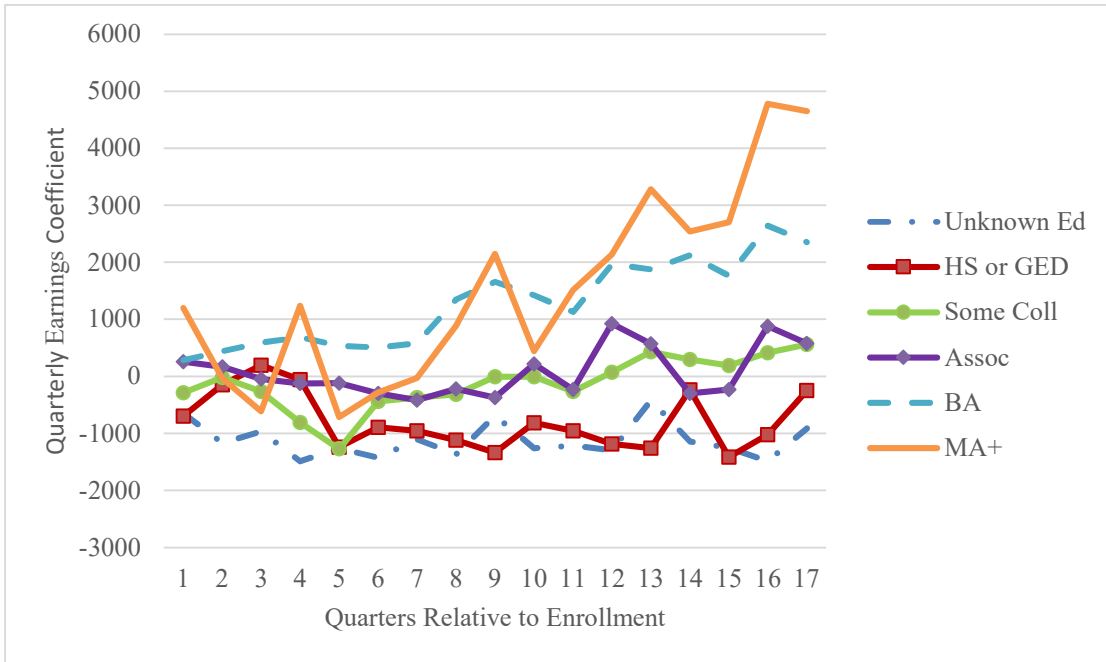


Panel B-Women

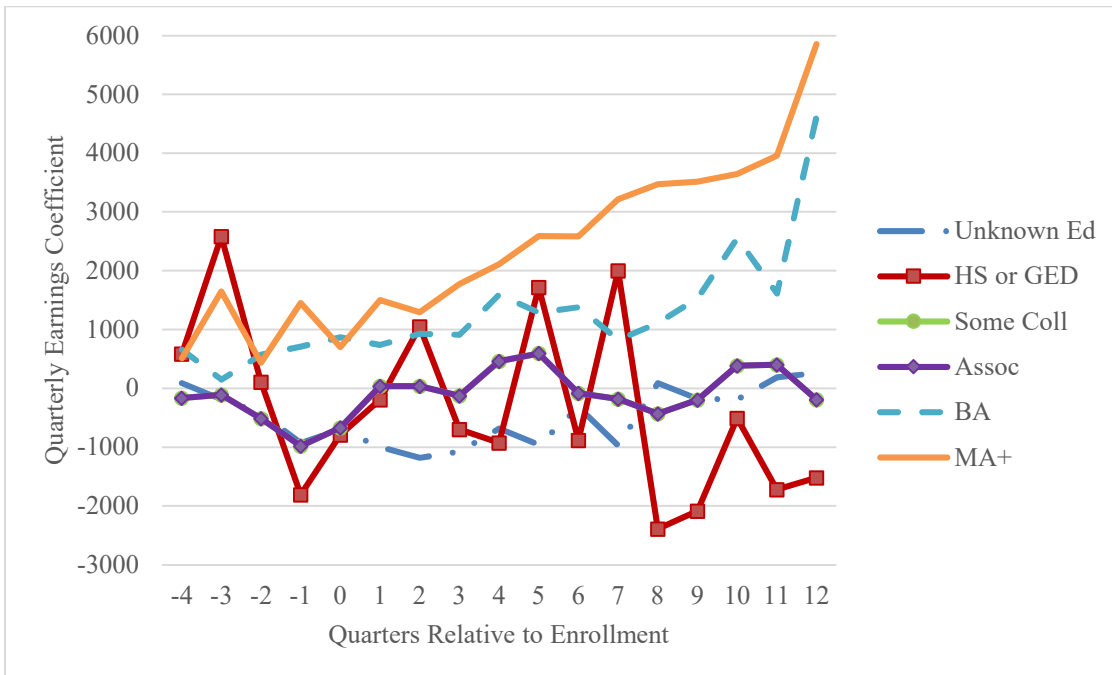


Appendix Figure 4: Estimated Effects of Treatment on Quarterly Earnings by Education and Quarter, All Enrolled Participants

Panel A-Men



Panel B-Women



Appendix Table 1: Main Specification (Equation 1) Male Enrollees

Variable	Earnings		Log-Earnings		Employment	
	Coeff	Std. Error	Coeff	Std. Error	Coeff	Std. Error
D -4	-67.751	47.218	0.001	0.008	0.023	0.003
D -3	-46.891	54.375	-0.002	0.011	0.015	0.004
D -2	-21.732	66.986	-0.005	0.011	0.006	0.006
D -1	-52.249	66.872	-0.007	0.013	0.000	0.007
D 0	135.839	77.515	0.000	0.013	-0.025	0.008
D 1	268.018	89.691	0.001	0.015	-0.060	0.008
D 2	347.874	109.968	-0.002	0.017	-0.086	0.008
D 3	281.548	110.572	-0.008	0.019	-0.112	0.009
D 4	324.147	129.393	-0.011	0.022	-0.136	0.010
D 5	441.365	135.279	-0.017	0.024	-0.161	0.011
D 6	554.403	158.006	-0.011	0.026	-0.178	0.011
D 7	514.554	174.056	-0.030	0.028	-0.200	0.012
D 8	545.036	182.799	-0.028	0.032	-0.223	0.012
D 9	613.260	194.199	-0.038	0.034	-0.238	0.013
D 10	697.549	225.008	-0.042	0.037	-0.252	0.014
D 11	709.707	246.425	-0.054	0.040	-0.272	0.015
D 12	782.280	252.507	-0.066	0.043	-0.291	0.016
D -4 * Treatment	-201.072	130.377	-0.050	0.030	-0.003	0.012
D -3 * Treatment	-343.597	145.326	-0.038	0.029	-0.010	0.013
D -2 * Treatment	-341.010	167.768	-0.023	0.028	-0.007	0.015
D -1 * Treatment	-586.891	173.793	-0.110	0.032	0.006	0.015
D 0 * Treatment	-819.732	177.988	-0.102	0.032	-0.002	0.015
D 1 * Treatment	-611.623	173.718	-0.054	0.028	0.016	0.015
D 2 * Treatment	-450.622	207.246	0.003	0.029	0.026	0.016
D 3 * Treatment	-346.922	199.186	0.017	0.029	0.046	0.015
D 4 * Treatment	100.821	205.551	0.037	0.032	0.049	0.016
D 5 * Treatment	-202.140	217.390	0.008	0.034	0.055	0.016
D 6 * Treatment	-268.517	234.281	0.025	0.030	0.052	0.016
D 7 * Treatment	36.334	229.638	0.054	0.033	0.042	0.017
D 8 * Treatment	505.853	247.280	0.081	0.032	0.049	0.018
D 9 * Treatment	200.830	244.446	0.049	0.032	0.060	0.017
D 10 * Treatment	16.609	255.565	0.042	0.032	0.048	0.018
D 11 * Treatment	381.646	284.011	0.091	0.032	0.051	0.018
D 12 * Treatment	589.287	301.973	0.085	0.036	0.062	0.018
Age	920.210	201.870	0.458	0.026	0.060	0.014
Age Squared	-16.104	5.331	-0.011	0.001	-0.002	0.000
Age Cubed	0.046	0.044	0.000	0.000	0.000	0.000
2011 Q3	178.525	228.177	0.057	0.042	0.028	0.014
2011 Q4	449.177	220.954	0.095	0.041	0.026	0.015

2012 Q1	394.797	232.741	0.074	0.043	0.034	0.016
2012 Q2	640.025	243.000	0.130	0.044	0.068	0.017
2012 Q3	640.558	254.956	0.162	0.046	0.098	0.017
2012 Q4	1180.436	256.830	0.217	0.047	0.096	0.017
2013 Q1	1053.857	264.384	0.178	0.048	0.095	0.018
2013 Q2	1165.180	261.732	0.232	0.048	0.129	0.018
2013 Q3	1145.460	262.640	0.255	0.048	0.147	0.017
2013 Q4	1668.748	266.961	0.313	0.049	0.143	0.018
2014 Q1	1644.144	269.853	0.283	0.049	0.132	0.018
2014 Q2	1685.502	264.976	0.331	0.049	0.173	0.017
2014 Q3	1842.411	262.635	0.359	0.050	0.182	0.018
2014 Q4	2494.790	267.198	0.441	0.049	0.202	0.018
2015 Q1	2350.334	268.771	0.400	0.049	0.187	0.018
2015 Q2	2730.731	262.118	0.486	0.048	0.234	0.018
2015 Q3	2683.763	261.002	0.502	0.048	0.245	0.019
2015 Q4	3990.927	268.974	0.645	0.049	0.250	0.018
2016 Q1	2952.701	266.664	0.523	0.049	0.267	0.019
2016 Q2	3385.539	266.182	0.598	0.049	0.290	0.019
2016 Q3	3839.554	270.302	0.664	0.049	0.313	0.019
2016 Q4	4113.628	271.034	0.705	0.050	0.324	0.019
2017 Q1	4117.636	281.098	0.677	0.050	0.330	0.019
2017 Q2	4145.542	274.877	0.717	0.051	0.349	0.020
2017 Q3	3906.914	276.659	0.705	0.051	0.361	0.020
2017 Q4	4704.847	286.705	0.792	0.052	0.369	0.020
2018 Q1	4793.379	301.495	0.768	0.053	0.371	0.021
2018 Q2	4788.724	294.823	0.804	0.054	0.396	0.022
2018 Q3	4560.128	292.933	0.801	0.054	0.405	0.022
2018 Q4	5471.668	312.698	0.891	0.056	0.419	0.022
2019 Q1	5625.618	345.944	0.870	0.058	0.426	0.023
2019 Q2	5539.417	326.219	0.912	0.059	0.441	0.024
2019 Q3	5457.096	333.624	0.922	0.060	0.452	0.024
2019 Q4	6595.019	353.176	1.023	0.062	0.479	0.025
2020 Q1	6486.454	388.499	0.982	0.065	0.477	0.026
2020 Q2	5452.878	376.937	0.848	0.067	0.468	0.027
2020 Q3	6179.231	381.837	0.982	0.068	0.483	0.027
2020 Q4	7787.014	421.586	1.120	0.070	0.498	0.028
2021 Q1	6650.467	453.296	1.021	0.073	0.512	0.029
2021 Q2	7112.698	448.912	1.100	0.077	0.525	0.030
2021 Q3	7461.829	468.124	1.180	0.080	0.536	0.030
2021 Q4	8909.061	522.419	1.297	0.084	0.554	0.031
N	2916288		2916288		3765477	
within R2	0.143		0.108		0.034	

Appendix Table 2: Main Specification (Equation 1) Female Enrollees

Variable	Earnings		Log-Earnings		Employment	
	Coeff	Std. Error	Coeff	Std. Error	Coeff	Std. Error
D -4	-98.017	115.028	-0.029	0.012	0.022	0.004
D -3	-175.518	89.217	-0.054	0.018	0.016	0.006
D -2	-146.499	78.752	-0.037	0.015	0.007	0.006
D -1	-170.731	84.928	-0.041	0.017	0.001	0.008
D 0	-186.936	138.466	-0.045	0.021	-0.015	0.010
D 1	-48.310	128.313	-0.014	0.022	-0.057	0.010
D 2	-22.524	133.365	-0.011	0.024	-0.080	0.010
D 3	41.113	141.921	-0.013	0.026	-0.098	0.011
D 4	-55.549	197.396	-0.030	0.031	-0.115	0.013
D 5	4.991	191.717	-0.027	0.033	-0.141	0.014
D 6	-4.037	197.603	-0.028	0.035	-0.156	0.015
D 7	-24.623	218.643	-0.031	0.038	-0.175	0.016
D 8	134.324	262.041	-0.035	0.042	-0.187	0.017
D 9	128.752	241.300	-0.025	0.045	-0.208	0.019
D 10	-76.642	256.881	-0.046	0.047	-0.221	0.020
D 11	-63.189	281.073	-0.067	0.053	-0.236	0.021
D 12	70.854	329.741	-0.062	0.056	-0.248	0.023
D -4 * Treatment	188.957	187.993	0.006	0.046	0.005	0.017
D -3 * Treatment	157.828	197.564	0.019	0.052	-0.002	0.020
D -2 * Treatment	-84.599	184.977	-0.050	0.048	0.018	0.021
D -1 * Treatment	-269.560	215.059	-0.090	0.048	0.023	0.023
D 0 * Treatment	-142.483	255.878	-0.022	0.047	0.023	0.024
D 1 * Treatment	-30.466	237.456	-0.020	0.051	0.017	0.024
D 2 * Treatment	-66.565	251.111	-0.010	0.044	0.029	0.024
D 3 * Treatment	79.274	257.753	0.038	0.043	0.017	0.024
D 4 * Treatment	446.814	377.777	0.030	0.049	0.019	0.025
D 5 * Treatment	391.676	282.844	0.026	0.053	0.034	0.024
D 6 * Treatment	483.782	286.691	0.033	0.049	0.033	0.026
D 7 * Treatment	213.315	305.896	0.042	0.046	0.030	0.025
D 8 * Treatment	645.580	462.383	0.042	0.052	0.035	0.027
D 9 * Treatment	575.949	331.001	0.021	0.061	0.047	0.025
D 10 * Treatment	1111.250	323.072	0.149	0.046	0.025	0.025
D 11 * Treatment	948.818	432.222	0.098	0.050	0.023	0.027
D 12 * Treatment	1861.332	759.962	0.154	0.054	0.048	0.027
Age	1356.385	461.976	0.464	0.085	-0.001	0.024
Age Squared	-31.511	11.757	-0.011	0.002	-0.001	0.001
Age Cubed	0.195	0.097	0.000	0.000	0.000	0.000
2011 Q3	-201.655	278.643	0.012	0.068	0.021	0.013
2011 Q4	1.346	238.952	0.041	0.068	0.024	0.015

2012 Q1	96.005	270.524	0.029	0.067	0.034	0.017
2012 Q2	446.299	280.161	0.059	0.075	0.055	0.016
2012 Q3	56.297	287.853	0.015	0.077	0.063	0.017
2012 Q4	372.237	282.066	0.100	0.076	0.071	0.016
2013 Q1	655.818	285.242	0.102	0.076	0.075	0.018
2013 Q2	797.530	283.883	0.147	0.078	0.101	0.018
2013 Q3	355.186	282.390	0.106	0.079	0.115	0.018
2013 Q4	907.131	282.668	0.189	0.079	0.124	0.018
2014 Q1	1087.618	338.490	0.171	0.083	0.098	0.019
2014 Q2	1158.298	300.921	0.200	0.083	0.135	0.019
2014 Q3	732.336	290.776	0.181	0.083	0.137	0.019
2014 Q4	1419.092	291.610	0.290	0.083	0.171	0.019
2015 Q1	1618.601	306.134	0.270	0.084	0.152	0.018
2015 Q2	2069.883	298.392	0.348	0.081	0.187	0.019
2015 Q3	1451.938	288.656	0.298	0.081	0.190	0.019
2015 Q4	2799.217	295.273	0.459	0.081	0.204	0.019
2016 Q1	1804.242	288.531	0.341	0.080	0.213	0.019
2016 Q2	2779.411	308.196	0.446	0.081	0.226	0.019
2016 Q3	2366.888	298.977	0.418	0.081	0.250	0.019
2016 Q4	2978.482	302.887	0.503	0.080	0.258	0.019
2017 Q1	2832.234	303.000	0.470	0.081	0.258	0.019
2017 Q2	3536.765	330.853	0.531	0.081	0.276	0.020
2017 Q3	2275.265	310.979	0.426	0.081	0.281	0.022
2017 Q4	3549.730	321.375	0.579	0.081	0.303	0.022
2018 Q1	3389.195	326.539	0.539	0.081	0.307	0.023
2018 Q2	4172.735	361.565	0.622	0.082	0.320	0.024
2018 Q3	2815.540	330.449	0.497	0.082	0.326	0.024
2018 Q4	4298.703	359.007	0.667	0.083	0.342	0.025
2019 Q1	4340.478	370.168	0.647	0.083	0.341	0.026
2019 Q2	5051.853	407.011	0.713	0.085	0.360	0.027
2019 Q3	3470.751	380.337	0.579	0.086	0.372	0.028
2019 Q4	5162.694	411.587	0.752	0.087	0.399	0.029
2020 Q1	5159.172	512.060	0.709	0.089	0.383	0.029
2020 Q2	5121.003	494.281	0.596	0.095	0.375	0.030
2020 Q3	4186.700	475.084	0.600	0.094	0.375	0.031
2020 Q4	6474.109	557.489	0.819	0.094	0.399	0.032
2021 Q1	5709.767	653.782	0.742	0.097	0.403	0.033
2021 Q2	6625.327	554.610	0.853	0.099	0.416	0.034
2021 Q3	5558.084	495.874	0.796	0.100	0.426	0.035
2021 Q4	7980.049	576.406	1.013	0.112	0.458	0.036
N	1437045		1437045		1437045	
within R2	0.108		0.063		0.025	

Appendix Table 3: Main Specification (equation 1), Males, Completers

Variable	Earnings		Log-Earnings		Employment	
	Coeff	Std. Error	Coeff	Std. Error	Coeff	Std. Error
D -4	-47.221	59.399	0.007	0.011	0.020	0.004
D -3	-33.951	67.685	0.005	0.014	0.009	0.005
D -2	-18.672	78.509	-0.004	0.015	-0.004	0.007
D -1	3.439	87.388	0.001	0.018	-0.010	0.008
D 0	253.200	100.966	0.006	0.018	-0.033	0.010
D 1	328.072	111.176	0.004	0.020	-0.070	0.010
D 2	385.851	132.959	-0.005	0.023	-0.093	0.010
D 3	453.131	146.746	-0.002	0.025	-0.120	0.010
D 4	490.822	166.021	-0.014	0.029	-0.142	0.011
D 5	613.592	185.122	-0.014	0.032	-0.170	0.013
D 6	722.841	209.310	-0.010	0.036	-0.186	0.013
D 7	720.639	229.306	-0.018	0.038	-0.206	0.014
D 8	799.153	246.593	-0.025	0.042	-0.227	0.016
D 9	810.684	267.028	-0.042	0.045	-0.243	0.016
D 10	909.696	299.850	-0.040	0.049	-0.259	0.017
D 11	968.119	337.118	-0.055	0.054	-0.280	0.019
D 12	1148.285	352.965	-0.067	0.058	-0.296	0.020
D -4 * Treatment	-184.233	170.808	-0.053	0.041	0.015	0.016
D -3 * Treatment	-404.227	188.072	-0.052	0.037	0.005	0.017
D -2 * Treatment	-560.880	223.886	-0.020	0.036	0.009	0.020
D -1 * Treatment	-761.726	211.821	-0.115	0.040	0.020	0.020
D 0 * Treatment	-895.556	225.560	-0.099	0.039	0.000	0.020
D 1 * Treatment	-859.379	233.914	-0.074	0.035	0.025	0.020
D 2 * Treatment	-605.396	241.968	-0.035	0.039	0.045	0.020
D 3 * Treatment	-615.461	247.955	-0.009	0.036	0.068	0.019
D 4 * Treatment	-96.068	291.455	-0.002	0.043	0.072	0.020
D 5 * Treatment	-374.791	293.633	0.016	0.040	0.074	0.021
D 6 * Treatment	-481.498	306.926	-0.004	0.040	0.069	0.021
D 7 * Treatment	-447.014	304.055	0.009	0.042	0.067	0.021
D 8 * Treatment	387.581	353.625	0.064	0.045	0.076	0.022
D 9 * Treatment	189.149	319.798	0.068	0.040	0.069	0.022
D 10 * Treatment	-121.592	308.107	0.037	0.038	0.070	0.022
D 11 * Treatment	30.756	365.545	0.075	0.039	0.067	0.023
D 12 * Treatment	399.581	425.633	0.071	0.050	0.089	0.023
Age	1048.959	333.965	0.553	0.043	0.116	0.021
Age Squared	-17.350	9.377	-0.014	0.001	-0.004	0.001
Age Cubed	0.052	0.083	0.000	0.000	0.000	0.000
2011 Q3	242.753	322.242	0.078	0.061	0.008	0.019
2011 Q4	564.370	318.611	0.138	0.061	0.001	0.021

2012 Q1	742.801	348.591	0.146	0.065	0.020	0.019
2012 Q2	1035.605	354.462	0.200	0.065	0.058	0.020
2012 Q3	1070.324	373.741	0.225	0.069	0.081	0.021
2012 Q4	1517.021	380.677	0.267	0.071	0.081	0.021
2013 Q1	1537.373	408.118	0.263	0.071	0.087	0.021
2013 Q2	1686.444	400.041	0.322	0.071	0.123	0.021
2013 Q3	1647.959	404.846	0.328	0.072	0.129	0.021
2013 Q4	2164.623	409.663	0.386	0.073	0.129	0.021
2014 Q1	2108.684	408.502	0.366	0.072	0.122	0.021
2014 Q2	2128.335	406.776	0.396	0.073	0.158	0.020
2014 Q3	2325.729	404.277	0.432	0.074	0.166	0.021
2014 Q4	2970.935	413.135	0.510	0.073	0.187	0.021
2015 Q1	2828.881	407.684	0.478	0.073	0.174	0.021
2015 Q2	3202.565	400.203	0.555	0.071	0.217	0.021
2015 Q3	3188.411	400.841	0.578	0.072	0.229	0.022
2015 Q4	4520.912	407.544	0.724	0.072	0.235	0.022
2016 Q1	3424.836	404.998	0.596	0.072	0.254	0.022
2016 Q2	3872.585	404.968	0.666	0.073	0.277	0.022
2016 Q3	4364.843	407.409	0.737	0.073	0.300	0.023
2016 Q4	4631.526	408.876	0.775	0.073	0.313	0.023
2017 Q1	4651.712	415.244	0.755	0.074	0.322	0.023
2017 Q2	4727.790	408.549	0.795	0.074	0.340	0.024
2017 Q3	4462.873	410.170	0.785	0.074	0.353	0.024
2017 Q4	5298.402	421.174	0.875	0.075	0.360	0.024
2018 Q1	5317.558	437.734	0.849	0.076	0.364	0.025
2018 Q2	5319.768	428.887	0.876	0.077	0.391	0.026
2018 Q3	5084.881	424.147	0.874	0.077	0.397	0.027
2018 Q4	6022.576	445.747	0.964	0.079	0.409	0.027
2019 Q1	6015.669	471.220	0.945	0.081	0.416	0.028
2019 Q2	6030.001	461.882	0.995	0.082	0.433	0.029
2019 Q3	5854.412	471.730	0.991	0.084	0.447	0.029
2019 Q4	7014.455	495.142	1.094	0.086	0.472	0.030
2020 Q1	6806.613	526.893	1.050	0.088	0.470	0.031
2020 Q2	5844.794	525.750	0.928	0.091	0.463	0.032
2020 Q3	6555.882	532.336	1.059	0.092	0.482	0.034
2020 Q4	8251.446	583.858	1.191	0.095	0.495	0.034
2021 Q1	7058.907	628.264	1.091	0.098	0.505	0.035
2021 Q2	7503.453	630.752	1.182	0.104	0.519	0.038
2021 Q3	7850.813	653.341	1.255	0.107	0.533	0.038
2021 Q4	9455.814	721.121	1.385	0.112	0.554	0.040
N	1715968		1715968		2196212	
within R2	0.148		0.110		0.034	

Appendix Table 4: Main Specification (equation 1), Females, Completers

Variable	Earnings		Log-Earnings		Employment	
	Coeff	Std. Error	Coeff	Std. Error	Coeff	Std. Error
D -4	-59.082	177.015	-0.030	0.017	0.023	0.005
D -3	-180.353	126.955	-0.046	0.024	0.012	0.006
D -2	-210.574	120.610	-0.047	0.023	0.007	0.007
D -1	-277.396	119.836	-0.049	0.027	-0.002	0.008
D 0	-222.046	205.500	-0.050	0.031	-0.023	0.011
D 1	-85.652	182.377	-0.015	0.033	-0.061	0.014
D 2	-85.482	196.754	-0.014	0.036	-0.084	0.016
D 3	9.950	202.480	-0.018	0.041	-0.107	0.017
D 4	8.244	276.151	-0.033	0.047	-0.127	0.020
D 5	-45.659	272.493	-0.034	0.051	-0.146	0.021
D 6	-64.578	284.466	-0.036	0.054	-0.166	0.023
D 7	35.353	296.742	-0.028	0.058	-0.185	0.025
D 8	59.594	375.334	-0.037	0.065	-0.198	0.027
D 9	135.822	352.892	-0.028	0.070	-0.218	0.029
D 10	-90.718	358.071	-0.057	0.074	-0.236	0.030
D 11	116.663	380.432	-0.078	0.084	-0.256	0.032
D 12	245.034	504.344	-0.078	0.090	-0.263	0.035
D -4 * Treatment	267.195	231.426	0.059	0.047	0.039	0.023
D -3 * Treatment	277.691	255.290	0.069	0.056	0.028	0.026
D -2 * Treatment	-0.720	252.920	-0.074	0.068	0.029	0.028
D -1 * Treatment	62.050	282.219	-0.036	0.060	0.022	0.032
D 0 * Treatment	107.515	303.459	-0.002	0.058	0.022	0.033
D 1 * Treatment	376.378	308.952	0.039	0.059	0.012	0.032
D 2 * Treatment	282.944	309.581	0.009	0.057	0.019	0.032
D 3 * Treatment	462.028	343.884	0.088	0.051	0.001	0.034
D 4 * Treatment	761.486	593.573	0.048	0.066	0.023	0.033
D 5 * Treatment	770.547	358.472	0.070	0.069	0.042	0.033
D 6 * Treatment	802.658	331.838	0.077	0.059	0.045	0.034
D 7 * Treatment	662.531	412.419	0.076	0.056	0.060	0.035
D 8 * Treatment	1024.710	689.617	0.052	0.065	0.058	0.036
D 9 * Treatment	1169.444	430.857	0.035	0.087	0.066	0.034
D 10 * Treatment	1428.483	427.147	0.195	0.051	0.039	0.034
D 11 * Treatment	1287.310	652.595	0.142	0.063	0.059	0.035
D 12 * Treatment	2696.584	1221.147	0.218	0.070	0.109	0.036
Age	3846.643	879.947	0.910	0.177	0.051	0.046
Age Squared	-95.650	23.138	-0.023	0.005	-0.002	0.001
Age Cubed	0.726	0.197	0.000	0.000	0.000	0.000
2011 Q3	-160.964	477.009	-0.005	0.140	0.023	0.024
2011 Q4	149.446	471.645	0.005	0.157	0.014	0.024

2012 Q1	-55.383	534.497	-0.010	0.155	0.029	0.031
2012 Q2	505.873	550.328	0.037	0.169	0.076	0.028
2012 Q3	-241.437	554.718	-0.008	0.165	0.082	0.031
2012 Q4	318.750	553.720	0.088	0.167	0.088	0.030
2013 Q1	510.974	541.668	0.088	0.169	0.098	0.035
2013 Q2	920.457	570.583	0.150	0.175	0.123	0.035
2013 Q3	222.681	561.590	0.070	0.177	0.133	0.036
2013 Q4	821.027	568.792	0.167	0.177	0.137	0.036
2014 Q1	1158.424	686.523	0.157	0.185	0.119	0.037
2014 Q2	1158.667	612.762	0.192	0.185	0.155	0.036
2014 Q3	541.109	585.437	0.142	0.185	0.155	0.036
2014 Q4	1384.068	587.529	0.286	0.185	0.185	0.036
2015 Q1	1568.871	616.727	0.254	0.187	0.171	0.035
2015 Q2	1985.567	596.550	0.318	0.182	0.206	0.036
2015 Q3	1224.906	577.387	0.261	0.181	0.209	0.036
2015 Q4	2670.831	586.288	0.425	0.182	0.221	0.036
2016 Q1	1729.472	577.013	0.321	0.180	0.235	0.036
2016 Q2	2826.728	599.772	0.440	0.182	0.248	0.035
2016 Q3	2158.297	576.268	0.392	0.180	0.272	0.036
2016 Q4	2888.136	585.870	0.483	0.179	0.282	0.036
2017 Q1	2820.780	580.353	0.466	0.179	0.278	0.037
2017 Q2	3491.271	612.009	0.506	0.178	0.302	0.037
2017 Q3	2150.175	576.578	0.395	0.177	0.312	0.038
2017 Q4	3539.696	586.792	0.564	0.176	0.330	0.039
2018 Q1	3387.354	585.457	0.523	0.175	0.336	0.040
2018 Q2	4322.792	619.491	0.624	0.174	0.351	0.041
2018 Q3	2693.915	578.664	0.477	0.173	0.358	0.041
2018 Q4	4329.323	609.620	0.653	0.174	0.372	0.042
2019 Q1	4376.421	619.442	0.636	0.174	0.373	0.043
2019 Q2	5083.219	649.893	0.693	0.175	0.391	0.046
2019 Q3	3478.139	629.359	0.552	0.175	0.405	0.047
2019 Q4	5155.081	641.797	0.739	0.176	0.432	0.048
2020 Q1	5038.106	669.982	0.703	0.178	0.419	0.049
2020 Q2	5071.199	704.318	0.589	0.184	0.411	0.050
2020 Q3	4278.739	719.699	0.601	0.183	0.411	0.051
2020 Q4	6466.131	806.149	0.804	0.183	0.433	0.052
2021 Q1	5718.563	893.797	0.749	0.187	0.444	0.053
2021 Q2	6472.346	774.349	0.861	0.190	0.461	0.054
2021 Q3	5599.474	748.812	0.800	0.191	0.467	0.056
2021 Q4	8020.295	809.575	1.034	0.207	0.507	0.057
N within R2	798597 0.108		798597 0.065		1002310 0.028	

Appendix Table 5: Specification Comparisons, Earnings, Men, Enrollees.

Variable	Equation 2 with T		Equation 2 w/out T		Equation 3 with T		Equation 3 w/out T	
	Coeff	Std. Error	Coeff	Std. Error	Coeff	Std. Error	Coeff	Std. Error
Intercept	7176.9	628.6	7178.6	628.6	-8333.5	9082.6	-8331.9	9082.6
Treatment	292.9	133.6			307.3	128.8		
D -4	67.4	216.4	65.7	216.4	306.8	178.5	305.1	178.5
D -3	151.3	258.3	149.6	258.3	421.2	212.7	419.5	212.7
D -2	255.6	296.9	253.9	297.0	576.7	246.0	575.0	245.9
D -1	304.3	322.0	302.6	322.0	671.7	263.9	670.0	263.9
D 0	605.3	364.0	603.7	364.1	1012.2	302.7	1010.5	302.7
D 1	950.9	409.1	949.3	409.1	1354.1	340.7	1352.4	340.7
D 2	1164.5	448.1	1162.9	448.1	1592.9	375.9	1591.2	375.9
D 3	1273.4	475.7	1271.8	475.7	1732.6	394.6	1730.9	394.5
D 4	1422.1	523.5	1420.5	523.6	1911.3	439.5	1909.6	439.5
D 5	1674.0	556.9	1672.4	556.9	2220.9	467.8	2219.2	467.7
D 6	1891.3	607.3	1889.7	607.3	2475.5	512.3	2473.8	512.3
D 7	1974.2	646.8	1972.6	646.8	2587.1	543.3	2585.4	543.3
D 8	2178.8	689.2	2177.2	689.3	2797.4	582.5	2795.7	582.5
D 9	2373.7	727.2	2372.1	727.3	3010.6	612.2	3008.9	612.1
D 10	2573.5	786.6	2571.9	786.6	3254.7	670.0	3253.0	669.9
D 11	2788.6	829.5	2787.0	829.6	3486.3	707.9	3484.6	707.9
D 12	3016.7	866.2	3015.0	866.3	3706.8	738.1	3705.1	738.1
D -4 * Treatment	-51.3	148.5	241.6	141.3	-46.0	141.5	261.3	139.5
D -3 * Treatment	-228.7	161.7	64.2	113.1	-179.2	155.4	128.1	113.6
D -2 * Treatment	-234.9	180.5	58.0	128.2	-295.2	174.7	12.1	127.4
D -1 * Treatment	-521.0	193.4	-228.1	139.3	-545.8	184.1	-238.5	136.1
D 0 * Treatment	-656.9	193.3	-364.0	154.9	-718.0	183.1	-410.7	150.2
D 1 * Treatment	-608.8	203.8	-315.9	172.9	-616.3	189.5	-309.0	166.9
D 2 * Treatment	-441.7	237.3	-148.8	197.6	-442.5	228.4	-135.2	193.5
D 3 * Treatment	-490.3	229.6	-197.4	191.6	-490.5	220.0	-183.2	186.6

D 4 * Treatment	-73.5	238.9	219.4	209.8	-49.5	227.6	257.8	204.5
D 5 * Treatment	-349.8	246.6	-56.9	211.4	-396.1	237.0	-88.8	206.2
D 6 * Treatment	-390.7	257.1	-97.8	229.5	-394.1	248.1	-86.8	225.2
D 7 * Treatment	-132.1	265.0	160.8	246.0	-88.5	252.6	218.8	237.7
D 8 * Treatment	326.8	278.4	619.7	259.3	376.9	266.7	684.2	253.5
D 9 * Treatment	-32.0	273.6	260.9	252.4	-25.0	261.9	282.3	246.1
D 10 * Treatment	-295.6	281.6	-2.7	265.1	-297.8	271.2	9.4	258.2
D 11 * Treatment	189.3	304.9	482.2	289.4	215.7	298.7	523.0	286.3
D 12 * Treatment	328.2	323.7	621.1	306.5	343.6	321.7	650.9	306.4
Age					569.1	802.9	569.1	802.9
Age Squared					-0.535	22.460	-0.535	22.460
Age Cubed					-0.068	0.198	-0.068	0.198
Black					-1072.8	1317.2	-1072.9	1317.3
Other Race					-2160.5	1704.1	-2160.6	1704.1
Two or More Races					-2367.8	2024.5	-2367.9	2024.5
Unknown Race					2542.8	1635.4	2542.6	1635.4
White					446.7	1286.0	446.6	1286.0
High School or GED					-2556.2	571.7	-2556.1	571.7
Masters					3554.6	1066.1	3554.6	1066.1
Missing Education					-308.8	487.7	-308.9	487.7
Associate or Certificate					-1537.9	617.1	-1537.8	617.1
Some College					-1658.5	386.9	-1658.5	386.9
2011 Q3	94.6	543.8	94.6	543.8	442.5	412.2	442.5	412.3
2011 Q4	418.7	562.2	418.7	562.3	740.6	429.2	740.6	429.2
2012 Q1	492.8	569.6	493.0	569.6	695.2	428.6	695.4	428.6
2012 Q2	242.1	548.1	242.2	548.1	726.5	406.5	726.6	406.5
2012 Q3	300.1	573.3	300.2	573.3	814.2	424.2	814.3	424.2
2012 Q4	830.8	593.3	830.8	593.3	1351.1	446.0	1351.1	446.0
2013 Q1	798.3	594.8	798.4	594.8	1188.8	448.3	1188.8	448.3
2013 Q2	671.7	589.0	671.6	589.1	1202.4	443.8	1202.4	443.8
2013 Q3	459.8	594.1	459.8	594.1	1011.8	445.9	1011.8	445.9

2013 Q4	997.2	598.8	997.2	598.8	1522.0	453.0	1522.0	453.0
2014 Q1	1085.8	602.7	1085.7	602.7	1460.0	456.5	1460.0	456.5
2014 Q2	943.5	601.4	943.4	601.4	1315.4	449.4	1315.3	449.4
2014 Q3	899.6	623.5	899.5	623.5	1285.8	461.5	1285.7	461.5
2014 Q4	1571.6	627.4	1571.5	627.4	1902.0	468.4	1902.0	468.4
2015 Q1	1337.4	640.8	1337.3	640.8	1670.0	480.9	1669.9	480.9
2015 Q2	1508.7	652.0	1508.6	652.0	1849.6	489.2	1849.5	489.2
2015 Q3	1371.3	667.3	1371.2	667.3	1689.0	500.0	1688.9	500.0
2015 Q4	2617.1	676.1	2617.0	676.1	2925.0	511.1	2924.9	511.1
2016 Q1	1559.3	694.3	1559.2	694.3	1810.4	525.4	1810.3	525.4
2016 Q2	1809.2	706.5	1809.2	706.5	2094.5	535.5	2094.4	535.5
2016 Q3	2200.4	733.5	2200.2	733.5	2455.6	557.8	2455.5	557.8
2016 Q4	2406.0	745.1	2405.9	745.1	2623.1	568.7	2623.0	568.7
2017 Q1	2365.0	778.9	2364.9	778.9	2540.4	599.3	2540.3	599.3
2017 Q2	2232.7	803.7	2232.6	803.7	2393.0	616.0	2392.9	616.0
2017 Q3	1904.9	838.3	1904.9	838.3	2026.4	647.9	2026.3	647.9
2017 Q4	2647.9	861.8	2647.9	861.8	2738.2	668.2	2738.1	668.2
2018 Q1	2656.8	898.5	2656.7	898.5	2686.8	703.7	2686.7	703.7
2018 Q2	2458.1	937.0	2458.0	937.0	2454.0	734.4	2453.9	734.4
2018 Q3	2138.2	994.1	2138.1	994.1	2167.7	780.5	2167.6	780.5
2018 Q4	2994.5	1022.6	2994.4	1022.6	2933.7	806.2	2933.6	806.2
2019 Q1	3043.0	1071.6	3042.9	1071.6	2944.3	854.5	2944.2	854.5
2019 Q2	2788.0	1081.9	2788.0	1081.9	2705.2	857.0	2705.1	857.0
2019 Q3	2718.0	1107.0	2717.9	1107.0	2551.6	884.0	2551.5	884.0
2019 Q4	3724.5	1151.3	3724.5	1151.3	3485.5	923.4	3485.4	923.4
2020 Q1	3539.7	1206.9	3539.6	1206.9	3278.1	977.0	3278.0	977.0
2020 Q2	2516.4	1216.0	2516.3	1216.0	2240.2	974.1	2240.1	974.1
2020 Q3	3174.8	1246.8	3174.8	1246.8	2790.7	1005.8	2790.6	1005.8
2020 Q4	4702.4	1320.9	4702.3	1320.9	4287.5	1072.3	4287.4	1072.3
2021 Q1	3427.7	1372.5	3427.6	1372.5	2973.7	1121.2	2973.6	1121.2
2021 Q2	3418.9	1382.3	3418.8	1382.3	3108.3	1117.2	3108.2	1117.2

2021 Q3	3428.8	1422.2	3428.7	1422.2	3234.8	1165.5	3234.7	1165.5
2021 Q4	4598.9	1493.9	4598.8	1493.9	4381.3	1272.0	4381.2	1272.0
N	2916288		2916288		2916288		2916288	
R-squared	0.051		0.051		0.191		0.191	

Appendix Table 6: Specification Comparisons, Earnings, Women, Enrollees.

Variable	Equation 2 with T		Equation 2 w/out T		Equation 3 with T		Equation 3 w/out T	
	Coeff	Std. Error	Coeff	Std. Error	Coeff	Std. Error	Coeff	Std. Error
Intercept	6799.2	1014.8	6800.9	1014.8	5477.7	13702.4	5479.7	13702.7
Treatment	301.7	164.7			337.4	166.3		
D -4	-381.1	282.0	-382.7	282.0	-328.7	260.9	-330.5	260.9
D -3	-521.6	316.6	-523.2	316.5	-466.6	287.7	-468.4	287.7
D -2	-493.9	337.5	-495.6	337.4	-400.0	300.6	-401.8	300.6
D -1	-541.7	397.9	-543.3	397.8	-431.6	353.0	-433.4	353.0
D 0	-567.0	430.3	-568.7	430.2	-438.0	385.2	-439.8	385.3
D 1	-401.2	482.8	-402.8	482.7	-340.8	434.2	-342.6	434.2
D 2	-307.8	506.3	-309.5	506.2	-215.2	449.7	-217.0	449.7
D 3	-235.4	563.6	-237.0	563.6	-125.7	500.6	-127.5	500.6
D 4	-349.2	595.0	-350.9	594.9	-260.1	538.3	-261.9	538.3
D 5	-279.6	661.7	-281.3	661.6	-140.3	588.8	-142.1	588.8
D 6	-310.9	695.2	-312.5	695.1	-159.6	615.4	-161.4	615.4
D 7	-338.5	773.8	-340.1	773.7	-170.1	685.1	-171.9	685.1
D 8	-204.4	805.8	-206.0	805.7	-23.8	725.0	-25.6	725.0
D 9	-205.5	838.4	-207.1	838.3	-36.9	744.1	-38.7	744.1
D 10	-380.2	895.4	-381.8	895.3	-216.1	792.3	-217.9	792.4
D 11	-388.3	992.6	-390.0	992.5	-252.4	868.9	-254.2	869.0
D 12	-165.7	983.5	-167.3	983.4	-30.6	882.8	-32.4	882.9
D -4 * Treatment	169.1	211.5	470.8	200.8	206.6	209.2	544.0	200.0
D -3 * Treatment	142.3	225.5	443.9	177.2	118.9	226.6	456.3	179.6
D -2 * Treatment	-158.7	209.7	143.0	161.6	-276.3	206.3	61.1	164.4
D -1 * Treatment	-404.2	242.0	-102.5	178.1	-546.6	244.5	-209.2	175.1
D 0 * Treatment	-203.5	279.2	98.1	225.6	-346.6	279.8	-9.2	226.7
D 1 * Treatment	83.0	278.8	384.7	235.8	-28.6	269.4	308.8	228.8
D 2 * Treatment	-37.4	287.5	264.3	242.9	-187.2	277.9	150.2	235.0
D 3 * Treatment	109.9	303.0	411.6	263.9	-59.5	291.5	277.9	255.3

D 4 * Treatment	386.2	450.3	687.9	412.3	302.4	435.0	639.8	399.2
D 5 * Treatment	312.9	316.0	614.6	282.1	208.5	311.3	545.9	281.7
D 6 * Treatment	405.1	324.5	706.7	300.9	291.5	315.9	628.8	298.2
D 7 * Treatment	246.4	365.0	548.0	329.8	155.5	353.1	492.9	322.1
D 8 * Treatment	669.9	525.0	971.5	506.9	531.1	509.6	868.5	498.2
D 9 * Treatment	680.8	360.6	982.4	339.5	561.9	356.2	899.3	343.9
D 10 * Treatment	1377.2	350.1	1678.9	333.5	1176.0	343.8	1513.4	332.9
D 11 * Treatment	1065.9	502.5	1367.6	486.4	871.7	488.1	1209.1	477.1
D 12 * Treatment	1806.9	793.3	2108.5	784.0	1675.6	783.0	2013.0	777.5
Age					-616.4	1131.6	-616.4	1131.6
Age Squared					30.9	29.9	30.9	29.9
Age Cubed					-0.349	0.250	-0.349	0.250
Black					-622.7	1037.6	-622.7	1037.7
Other Race					-2530.4	1389.4	-2530.8	1389.5
Two or More Races					-1887.7	1641.8	-1887.8	1641.9
Unknown Race					4595.6	1571.3	4595.7	1571.3
White					874.3	964.0	874.3	964.1
High School or GED					120.6	3271.9	120.7	3271.9
Masters					2052.4	825.6	2052.3	825.6
Missing Education					-816.2	707.2	-816.3	707.2
Associate or Certificate					-2074.6	1226.9	-2074.6	1226.9
Some College					-1390.4	606.3	-1390.4	606.3
2011 Q3	90.7	694.5	90.7	694.5	-20.5	632.9	-20.5	632.9
2011 Q4	353.3	677.2	353.3	677.2	210.7	619.1	210.7	619.1
2012 Q1	292.8	792.1	292.9	792.1	384.8	703.2	384.9	703.2
2012 Q2	249.5	852.7	249.6	852.7	473.2	738.9	473.3	738.9
2012 Q3	-173.0	847.1	-172.9	847.1	131.9	744.2	132.0	744.2
2012 Q4	110.9	864.1	111.0	864.1	408.0	759.2	408.1	759.2
2013 Q1	546.9	788.6	547.0	788.6	812.6	682.7	812.6	682.7
2013 Q2	597.4	914.0	597.4	914.0	852.6	805.4	852.6	805.4
2013 Q3	51.2	905.7	51.2	905.7	344.0	797.1	344.0	797.1

2013 Q4	583.1	896.1	583.0	896.1	877.6	786.1	877.5	786.1
2014 Q1	1197.0	933.7	1197.0	933.7	1382.9	820.3	1382.9	820.3
2014 Q2	1292.3	954.7	1292.2	954.7	1458.3	835.4	1458.1	835.4
2014 Q3	739.3	966.3	739.2	966.3	914.7	844.4	914.6	844.4
2014 Q4	1347.4	1000.9	1347.3	1000.9	1479.8	880.0	1479.7	880.0
2015 Q1	1587.7	992.7	1587.6	992.7	1759.6	868.2	1759.6	868.2
2015 Q2	1948.9	1030.0	1948.8	1030.0	2169.6	903.0	2169.6	903.0
2015 Q3	1401.7	1033.0	1401.6	1033.0	1608.3	900.1	1608.2	900.1
2015 Q4	2664.3	1071.8	2664.3	1071.8	2853.7	939.6	2853.7	939.6
2016 Q1	1744.6	1069.9	1744.6	1069.9	1922.5	932.1	1922.4	932.1
2016 Q2	2619.9	1118.4	2619.9	1118.4	2826.4	981.0	2826.4	981.0
2016 Q3	2195.7	1128.3	2195.6	1128.3	2379.3	983.7	2379.2	983.7
2016 Q4	2814.6	1160.0	2814.5	1160.0	3026.3	1013.9	3026.3	1013.9
2017 Q1	2742.5	1180.6	2742.4	1180.6	2923.6	1030.7	2923.5	1030.7
2017 Q2	3475.1	1225.0	3475.0	1225.0	3651.4	1070.6	3651.2	1070.6
2017 Q3	2252.0	1297.9	2251.9	1297.9	2415.7	1135.0	2415.6	1135.0
2017 Q4	3514.1	1316.5	3514.0	1316.5	3680.6	1150.9	3680.5	1150.9
2018 Q1	3379.7	1350.0	3379.6	1350.0	3538.9	1180.5	3538.8	1180.5
2018 Q2	4171.2	1436.7	4171.1	1436.7	4326.4	1264.1	4326.3	1264.1
2018 Q3	2845.1	1467.6	2845.0	1467.6	3006.6	1286.7	3006.5	1286.7
2018 Q4	4235.2	1514.5	4235.1	1514.5	4418.4	1327.3	4418.3	1327.3
2019 Q1	4316.3	1552.9	4316.2	1552.9	4487.4	1361.3	4487.3	1361.3
2019 Q2	5100.1	1594.9	5100.0	1594.9	5232.6	1403.7	5232.5	1403.7
2019 Q3	3687.8	1584.2	3687.8	1584.2	3756.6	1387.0	3756.5	1387.0
2019 Q4	5383.7	1655.7	5383.6	1655.8	5413.5	1444.3	5413.4	1444.3
2020 Q1	5338.5	1727.7	5338.4	1727.7	5366.9	1504.6	5366.8	1504.6
2020 Q2	5587.8	1759.5	5587.7	1759.5	5545.6	1532.0	5545.5	1532.0
2020 Q3	4760.6	1757.1	4760.5	1757.1	4723.2	1527.2	4723.1	1527.2
2020 Q4	7117.6	1886.4	7117.5	1886.4	7078.3	1629.6	7078.2	1629.6
2021 Q1	6352.9	1947.6	6352.8	1947.6	6305.4	1685.0	6305.3	1685.0
2021 Q2	6784.5	1946.6	6784.4	1946.6	6798.3	1710.5	6798.2	1710.5

2021 Q3	5267.2	1907.9	5267.1	1907.9	5346.8	1670.1	5346.7	1670.1
2021 Q4	7626.5	2044.5	7626.4	2044.5	7952.9	1756.8	7952.8	1756.8
N	1437045		1437045		1437045		1437045	
R-squared	0.055		0.055		0.163		0.163	

Appendix Table 7: Specification Comparison, Men, Ln-Earnings, Enrollees

Variable	Equation 2 with T		Equation 2 w/out T		Equation 3 with T		Equation 3 w/out T	
	Coeff	Std. Error	Coeff	Std. Error	Coeff	Std. Error	Coeff	Std. Error
Intercept	8.428	0.100	8.428	0.100	2.781	0.933	2.781	0.933
Treatment	0.045	0.020			0.046	0.019		
D -4	0.011	0.028	0.011	0.028	0.048	0.023	0.048	0.023
D -3	0.019	0.032	0.019	0.032	0.060	0.027	0.060	0.027
D -2	0.028	0.036	0.028	0.036	0.075	0.030	0.075	0.030
D -1	0.036	0.040	0.036	0.040	0.088	0.034	0.088	0.034
D 0	0.063	0.044	0.063	0.044	0.120	0.037	0.120	0.037
D 1	0.101	0.047	0.101	0.047	0.159	0.040	0.159	0.040
D 2	0.120	0.051	0.120	0.051	0.182	0.043	0.182	0.043
D 3	0.141	0.054	0.141	0.054	0.207	0.046	0.207	0.046
D 4	0.153	0.058	0.153	0.058	0.224	0.049	0.224	0.049
D 5	0.166	0.062	0.166	0.062	0.244	0.053	0.244	0.053
D 6	0.189	0.066	0.189	0.066	0.273	0.056	0.273	0.056
D 7	0.189	0.070	0.189	0.070	0.277	0.060	0.277	0.060
D 8	0.218	0.074	0.218	0.074	0.307	0.064	0.307	0.064
D 9	0.227	0.077	0.227	0.077	0.318	0.066	0.318	0.066
D 10	0.239	0.081	0.239	0.081	0.336	0.070	0.335	0.070
D 11	0.254	0.085	0.254	0.085	0.354	0.074	0.353	0.074
D 12	0.267	0.088	0.267	0.088	0.365	0.077	0.365	0.077
D -4 * Treatment	-0.023	0.032	0.023	0.029	-0.024	0.031	0.022	0.028
D -3 * Treatment	-0.036	0.031	0.010	0.025	-0.029	0.029	0.017	0.024
D -2 * Treatment	-0.010	0.030	0.036	0.025	-0.017	0.029	0.029	0.024
D -1 * Treatment	-0.096	0.035	-0.051	0.029	-0.101	0.034	-0.055	0.028
D 0 * Treatment	-0.075	0.034	-0.029	0.030	-0.084	0.033	-0.038	0.029
D 1 * Treatment	-0.055	0.031	-0.010	0.027	-0.058	0.030	-0.012	0.026
D 2 * Treatment	-0.004	0.032	0.042	0.027	-0.004	0.032	0.042	0.027
D 3 * Treatment	-0.018	0.031	0.027	0.028	-0.018	0.031	0.028	0.027

D 4 * Treatment	0.011	0.033	0.057	0.028	0.014	0.032	0.060	0.028
D 5 * Treatment	-0.018	0.035	0.027	0.031	-0.024	0.035	0.022	0.031
D 6 * Treatment	0.009	0.032	0.054	0.028	0.008	0.030	0.054	0.028
D 7 * Treatment	0.035	0.034	0.080	0.030	0.040	0.033	0.086	0.030
D 8 * Treatment	0.058	0.033	0.103	0.029	0.065	0.032	0.111	0.029
D 9 * Treatment	0.008	0.034	0.053	0.032	0.011	0.033	0.057	0.032
D 10 * Treatment	0.000	0.033	0.045	0.030	0.000	0.032	0.046	0.030
D 11 * Treatment	0.054	0.033	0.099	0.029	0.057	0.032	0.103	0.029
D 12 * Treatment	0.035	0.037	0.080	0.033	0.036	0.037	0.082	0.034
Age					0.375	0.079	0.375	0.079
Age Squared					-0.008	0.002	-0.008	0.002
Age Cubed					0.000	0.000	0.000	0.000
Black					-0.115	0.146	-0.115	0.146
Other Race					-0.178	0.199	-0.178	0.199
Two or More Races					-0.403	0.271	-0.403	0.271
Unknown Race					0.234	0.156	0.234	0.156
White					0.042	0.137	0.042	0.137
High School or GED					-0.382	0.096	-0.382	0.096
Masters					0.279	0.085	0.279	0.085
Missing Education					-0.030	0.057	-0.030	0.057
Associate or Certificate					-0.119	0.088	-0.119	0.088
Some College					-0.143	0.053	-0.143	0.053
2011 Q3	0.043	0.081	0.043	0.081	0.072	0.061	0.072	0.061
2011 Q4	0.087	0.082	0.087	0.082	0.112	0.062	0.112	0.062
2012 Q1	0.090	0.084	0.090	0.084	0.101	0.063	0.101	0.063
2012 Q2	0.073	0.086	0.073	0.086	0.119	0.064	0.119	0.064
2012 Q3	0.107	0.090	0.107	0.090	0.158	0.068	0.158	0.068
2012 Q4	0.162	0.090	0.162	0.090	0.212	0.068	0.212	0.068
2013 Q1	0.137	0.092	0.137	0.092	0.169	0.070	0.169	0.070
2013 Q2	0.145	0.093	0.145	0.093	0.194	0.069	0.194	0.069
2013 Q3	0.145	0.094	0.145	0.094	0.195	0.070	0.195	0.070

2013 Q4	0.206	0.094	0.206	0.094	0.251	0.071	0.251	0.071
2014 Q1	0.195	0.094	0.195	0.094	0.223	0.070	0.223	0.070
2014 Q2	0.214	0.096	0.214	0.096	0.240	0.071	0.240	0.071
2014 Q3	0.212	0.099	0.212	0.099	0.238	0.073	0.238	0.073
2014 Q4	0.295	0.098	0.295	0.098	0.313	0.073	0.313	0.073
2015 Q1	0.245	0.100	0.245	0.100	0.264	0.074	0.264	0.074
2015 Q2	0.298	0.102	0.298	0.102	0.319	0.076	0.319	0.076
2015 Q3	0.303	0.104	0.303	0.104	0.321	0.078	0.321	0.078
2015 Q4	0.437	0.105	0.437	0.105	0.454	0.078	0.454	0.078
2016 Q1	0.318	0.107	0.318	0.107	0.327	0.080	0.327	0.080
2016 Q2	0.363	0.109	0.363	0.109	0.377	0.082	0.377	0.082
2016 Q3	0.420	0.111	0.420	0.111	0.430	0.084	0.430	0.084
2016 Q4	0.451	0.113	0.451	0.113	0.456	0.085	0.456	0.085
2017 Q1	0.419	0.116	0.419	0.116	0.417	0.087	0.417	0.087
2017 Q2	0.438	0.119	0.438	0.119	0.433	0.090	0.433	0.090
2017 Q3	0.411	0.122	0.411	0.122	0.401	0.093	0.401	0.093
2017 Q4	0.489	0.124	0.489	0.124	0.474	0.094	0.474	0.094
2018 Q1	0.457	0.128	0.457	0.128	0.434	0.098	0.434	0.098
2018 Q2	0.463	0.132	0.463	0.132	0.436	0.101	0.436	0.101
2018 Q3	0.443	0.136	0.443	0.136	0.417	0.104	0.417	0.104
2018 Q4	0.523	0.138	0.523	0.138	0.486	0.106	0.486	0.106
2019 Q1	0.489	0.141	0.489	0.141	0.448	0.109	0.448	0.109
2019 Q2	0.505	0.143	0.505	0.143	0.464	0.110	0.464	0.110
2019 Q3	0.516	0.144	0.516	0.144	0.464	0.111	0.464	0.111
2019 Q4	0.595	0.146	0.595	0.146	0.532	0.114	0.532	0.114
2020 Q1	0.546	0.150	0.546	0.150	0.479	0.117	0.479	0.117
2020 Q2	0.420	0.152	0.420	0.152	0.352	0.119	0.352	0.119
2020 Q3	0.546	0.153	0.546	0.153	0.466	0.120	0.466	0.120
2020 Q4	0.658	0.156	0.658	0.156	0.578	0.123	0.578	0.123
2021 Q1	0.544	0.160	0.544	0.160	0.458	0.127	0.458	0.127
2021 Q2	0.560	0.162	0.560	0.162	0.490	0.128	0.490	0.128

2021 Q3	0.576	0.164	0.576	0.164	0.525	0.132	0.525	0.132
2021 Q4	0.667	0.167	0.667	0.167	0.616	0.138	0.616	0.138
N	2916288		2916288		2916288		2916288	
R-squared	0.048		0.048		0.180		0.180	

Appendix Table 8: Specification Comparisons, In-Earnings, Women, Enrollees.

Variable	Equation 2 with T		Equation 2 w/out T		Equation 3 with T		Equation 3 w/out T	
	Coeff	Std. Error	Coeff	Std. Error	Coeff	Std. Error	Coeff	Std. Error
Intercept	8.384	0.134	8.384	0.134	4.553	1.839	4.553	1.839
Treatment	0.069	0.029			0.071	0.028		
D -4	-0.065	0.038	-0.066	0.038	-0.050	0.034	-0.050	0.034
D -3	-0.100	0.046	-0.101	0.046	-0.084	0.043	-0.084	0.043
D -2	-0.080	0.050	-0.081	0.050	-0.058	0.045	-0.058	0.045
D -1	-0.083	0.056	-0.083	0.056	-0.057	0.051	-0.057	0.051
D 0	-0.086	0.062	-0.087	0.062	-0.056	0.056	-0.057	0.057
D 1	-0.037	0.067	-0.037	0.067	-0.013	0.061	-0.014	0.061
D 2	-0.014	0.072	-0.015	0.072	0.015	0.066	0.014	0.066
D 3	-0.005	0.078	-0.006	0.078	0.027	0.071	0.027	0.071
D 4	-0.024	0.083	-0.024	0.083	0.009	0.077	0.008	0.077
D 5	-0.008	0.090	-0.009	0.090	0.031	0.082	0.031	0.082
D 6	-0.008	0.095	-0.008	0.095	0.035	0.086	0.035	0.086
D 7	-0.004	0.101	-0.005	0.101	0.043	0.093	0.043	0.093
D 8	-0.013	0.107	-0.014	0.107	0.038	0.098	0.038	0.098
D 9	0.002	0.112	0.001	0.112	0.053	0.103	0.052	0.103
D 10	-0.012	0.117	-0.012	0.117	0.040	0.107	0.040	0.107
D 11	-0.031	0.125	-0.031	0.125	0.018	0.113	0.018	0.113
D 12	-0.020	0.129	-0.021	0.129	0.032	0.118	0.031	0.118
D -4 * Treatment	-0.004	0.051	0.065	0.048	-0.001	0.050	0.070	0.048
D -3 * Treatment	0.006	0.056	0.075	0.050	0.002	0.055	0.073	0.050
D -2 * Treatment	-0.073	0.050	-0.005	0.045	-0.086	0.050	-0.015	0.045
D -1 * Treatment	-0.121	0.053	-0.052	0.042	-0.136	0.052	-0.065	0.041
D 0 * Treatment	-0.029	0.052	0.039	0.045	-0.046	0.051	0.025	0.045
D 1 * Treatment	0.004	0.053	0.073	0.046	-0.008	0.052	0.063	0.045
D 2 * Treatment	-0.013	0.049	0.055	0.043	-0.030	0.047	0.041	0.042
D 3 * Treatment	0.042	0.044	0.110	0.041	0.022	0.043	0.093	0.040

D 4 * Treatment	0.008	0.054	0.076	0.050	-0.001	0.054	0.070	0.050
D 5 * Treatment	0.002	0.056	0.070	0.053	-0.009	0.055	0.062	0.052
D 6 * Treatment	-0.006	0.058	0.063	0.054	-0.018	0.057	0.052	0.054
D 7 * Treatment	0.030	0.051	0.098	0.047	0.021	0.050	0.092	0.047
D 8 * Treatment	0.033	0.057	0.102	0.052	0.021	0.056	0.092	0.051
D 9 * Treatment	0.029	0.062	0.097	0.058	0.019	0.062	0.090	0.058
D 10 * Treatment	0.193	0.046	0.262	0.040	0.173	0.045	0.244	0.040
D 11 * Treatment	0.103	0.058	0.172	0.053	0.085	0.057	0.156	0.053
D 12 * Treatment	0.128	0.059	0.196	0.057	0.117	0.057	0.188	0.056
Age					0.227	0.148	0.227	0.148
Age Squared					-0.004	0.004	-0.004	0.004
Age Cubed					0.000	0.000	0.000	0.000
Black					-0.202	0.165	-0.202	0.165
Other Race					-0.588	0.303	-0.588	0.303
Two or More Races					-0.369	0.344	-0.369	0.344
Unknown Race					0.446	0.185	0.446	0.185
White					0.016	0.154	0.016	0.154
High School or GED					-0.216	0.348	-0.216	0.348
Masters					0.125	0.101	0.125	0.101
Missing Education					-0.131	0.091	-0.131	0.091
Associate or Certificate					-0.225	0.183	-0.225	0.183
Some College					-0.193	0.083	-0.193	0.083
2011 Q3	0.102	0.096	0.102	0.096	0.078	0.081	0.078	0.081
2011 Q4	0.141	0.099	0.141	0.099	0.111	0.085	0.111	0.085
2012 Q1	0.124	0.107	0.124	0.107	0.119	0.091	0.119	0.091
2012 Q2	0.104	0.113	0.104	0.113	0.113	0.095	0.113	0.095
2012 Q3	0.054	0.116	0.054	0.116	0.078	0.097	0.078	0.097
2012 Q4	0.132	0.116	0.132	0.116	0.154	0.098	0.154	0.098
2013 Q1	0.154	0.117	0.154	0.117	0.171	0.099	0.171	0.099
2013 Q2	0.168	0.122	0.168	0.122	0.184	0.103	0.184	0.103
2013 Q3	0.115	0.123	0.115	0.123	0.138	0.103	0.138	0.103

2013 Q4	0.193	0.123	0.193	0.123	0.216	0.103	0.216	0.103
2014 Q1	0.224	0.125	0.224	0.125	0.233	0.105	0.233	0.105
2014 Q2	0.243	0.128	0.243	0.128	0.247	0.107	0.247	0.107
2014 Q3	0.207	0.129	0.207	0.129	0.208	0.108	0.208	0.108
2014 Q4	0.300	0.132	0.300	0.132	0.296	0.110	0.296	0.110
2015 Q1	0.299	0.133	0.299	0.133	0.296	0.111	0.296	0.111
2015 Q2	0.350	0.137	0.350	0.137	0.354	0.114	0.354	0.114
2015 Q3	0.314	0.139	0.314	0.139	0.315	0.116	0.315	0.116
2015 Q4	0.455	0.141	0.455	0.141	0.454	0.118	0.454	0.118
2016 Q1	0.350	0.143	0.350	0.143	0.347	0.119	0.347	0.119
2016 Q2	0.441	0.147	0.441	0.147	0.440	0.123	0.440	0.123
2016 Q3	0.401	0.149	0.401	0.149	0.396	0.125	0.396	0.125
2016 Q4	0.486	0.152	0.486	0.152	0.483	0.128	0.483	0.128
2017 Q1	0.467	0.156	0.467	0.156	0.458	0.131	0.458	0.131
2017 Q2	0.524	0.162	0.524	0.162	0.512	0.136	0.512	0.136
2017 Q3	0.427	0.167	0.427	0.167	0.412	0.141	0.412	0.141
2017 Q4	0.572	0.171	0.572	0.171	0.556	0.145	0.556	0.145
2018 Q1	0.532	0.176	0.532	0.176	0.514	0.149	0.514	0.149
2018 Q2	0.612	0.183	0.612	0.183	0.592	0.156	0.591	0.156
2018 Q3	0.494	0.189	0.494	0.189	0.471	0.160	0.471	0.160
2018 Q4	0.638	0.192	0.638	0.192	0.618	0.163	0.618	0.163
2019 Q1	0.624	0.196	0.624	0.196	0.601	0.167	0.601	0.167
2019 Q2	0.687	0.200	0.687	0.200	0.658	0.170	0.658	0.170
2019 Q3	0.569	0.200	0.569	0.200	0.531	0.171	0.531	0.171
2019 Q4	0.732	0.204	0.732	0.204	0.685	0.174	0.685	0.174
2020 Q1	0.690	0.210	0.690	0.210	0.640	0.179	0.640	0.179
2020 Q2	0.618	0.216	0.618	0.216	0.559	0.185	0.559	0.185
2020 Q3	0.639	0.215	0.639	0.215	0.581	0.184	0.581	0.184
2020 Q4	0.848	0.221	0.848	0.221	0.786	0.188	0.786	0.188
2021 Q1	0.775	0.226	0.775	0.226	0.711	0.193	0.711	0.193
2021 Q2	0.850	0.228	0.849	0.228	0.788	0.197	0.788	0.197

2021 Q3	0.729	0.231	0.729	0.231	0.676	0.200	0.676	0.200
2021 Q4	0.938	0.237	0.938	0.237	0.917	0.205	0.917	0.205
N	1437045		1437045		1437045		1437045	
R-squared	0.035		0.035		0.119		0.119	

Appendix Table 9: Specification Comparisons, Employment, Men, Enrollees

Variable	Equation 2 with T		Equation 2 w/out T		Equation 3 with T		Equation 3 w/out T	
	Coeff	Std. Error	Coeff	Std. Error	Coeff	Std. Error	Coeff	Std. Error
Intercept	0.638	0.028	0.638	0.028	-0.325	0.272	-0.325	0.272
Treatment	0.001	0.010			0.001	0.010		
D -4	0.076	0.007	0.076	0.007	0.078	0.007	0.078	0.007
D -3	0.077	0.009	0.077	0.009	0.079	0.008	0.079	0.008
D -2	0.077	0.010	0.077	0.010	0.079	0.009	0.079	0.009
D -1	0.081	0.011	0.081	0.011	0.084	0.010	0.084	0.010
D 0	0.067	0.012	0.067	0.012	0.069	0.012	0.069	0.012
D 1	0.040	0.013	0.040	0.013	0.043	0.012	0.043	0.012
D 2	0.023	0.013	0.023	0.013	0.027	0.013	0.027	0.013
D 3	0.007	0.014	0.007	0.014	0.011	0.014	0.011	0.014
D 4	-0.007	0.016	-0.007	0.016	-0.002	0.015	-0.002	0.015
D 5	-0.022	0.017	-0.022	0.017	-0.018	0.016	-0.018	0.016
D 6	-0.029	0.018	-0.029	0.018	-0.024	0.017	-0.024	0.017
D 7	-0.040	0.019	-0.040	0.019	-0.035	0.018	-0.035	0.018
D 8	-0.052	0.020	-0.052	0.020	-0.046	0.019	-0.046	0.019
D 9	-0.055	0.021	-0.055	0.021	-0.050	0.020	-0.050	0.020
D 10	-0.058	0.022	-0.058	0.022	-0.053	0.022	-0.053	0.022
D 11	-0.068	0.023	-0.068	0.023	-0.063	0.023	-0.063	0.023
D 12	-0.074	0.025	-0.074	0.025	-0.068	0.024	-0.068	0.024
D -4 * Treatment	-0.003	0.012	-0.002	0.010	-0.003	0.012	-0.002	0.010
D -3 * Treatment	-0.010	0.013	-0.009	0.009	-0.010	0.013	-0.010	0.009
D -2 * Treatment	-0.007	0.015	-0.006	0.010	-0.007	0.015	-0.006	0.010
D -1 * Treatment	0.006	0.015	0.007	0.010	0.006	0.015	0.007	0.010
D 0 * Treatment	-0.002	0.015	-0.001	0.011	-0.002	0.015	-0.001	0.011
D 1 * Treatment	0.016	0.015	0.017	0.012	0.016	0.015	0.017	0.012
D 2 * Treatment	0.026	0.015	0.027	0.012	0.026	0.015	0.027	0.012
D 3 * Treatment	0.046	0.015	0.047	0.012	0.046	0.015	0.047	0.012

D 4 * Treatment	0.049	0.016	0.050	0.012	0.049	0.016	0.050	0.012
D 5 * Treatment	0.055	0.016	0.056	0.013	0.055	0.016	0.056	0.013
D 6 * Treatment	0.052	0.016	0.053	0.013	0.052	0.016	0.052	0.013
D 7 * Treatment	0.042	0.017	0.043	0.014	0.042	0.017	0.043	0.014
D 8 * Treatment	0.049	0.017	0.050	0.014	0.049	0.017	0.049	0.014
D 9 * Treatment	0.060	0.017	0.061	0.014	0.060	0.017	0.061	0.014
D 10 * Treatment	0.048	0.017	0.049	0.014	0.048	0.017	0.049	0.014
D 11 * Treatment	0.052	0.018	0.053	0.015	0.052	0.018	0.053	0.015
D 12 * Treatment	0.065	0.018	0.066	0.016	0.065	0.018	0.065	0.016
Age					0.069	0.022	0.069	0.022
Age Squared					-0.002	0.001	-0.002	0.001
Age Cubed					0.000	0.000	0.000	0.000
Black					0.033	0.038	0.033	0.038
Other Race					-0.033	0.075	-0.033	0.075
Two or More Races					-0.035	0.065	-0.035	0.065
Unknown Race					-0.039	0.044	-0.039	0.044
White					0.018	0.036	0.018	0.036
High School or GED					-0.098	0.029	-0.098	0.029
Masters					0.020	0.021	0.020	0.021
Missing Education					-0.029	0.019	-0.029	0.019
Associate or Certificate					0.018	0.031	0.018	0.031
Some College					0.026	0.016	0.026	0.016
2011 Q3	0.039	0.022	0.039	0.022	0.039	0.020	0.039	0.020
2011 Q4	0.037	0.022	0.037	0.022	0.038	0.020	0.038	0.020
2012 Q1	0.041	0.023	0.041	0.023	0.042	0.021	0.042	0.021
2012 Q2	0.064	0.024	0.064	0.024	0.068	0.022	0.068	0.022
2012 Q3	0.093	0.025	0.093	0.025	0.095	0.023	0.095	0.023
2012 Q4	0.091	0.025	0.091	0.025	0.093	0.023	0.093	0.023
2013 Q1	0.084	0.026	0.084	0.026	0.083	0.024	0.083	0.024
2013 Q2	0.111	0.026	0.111	0.026	0.109	0.024	0.109	0.024
2013 Q3	0.121	0.026	0.121	0.026	0.119	0.025	0.119	0.025

2013 Q4	0.117	0.026	0.117	0.026	0.115	0.025	0.115	0.025
2014 Q1	0.101	0.026	0.101	0.026	0.099	0.025	0.099	0.025
2014 Q2	0.130	0.027	0.130	0.027	0.126	0.025	0.126	0.025
2014 Q3	0.121	0.028	0.121	0.028	0.118	0.026	0.118	0.026
2014 Q4	0.139	0.028	0.139	0.028	0.135	0.026	0.135	0.026
2015 Q1	0.112	0.028	0.112	0.028	0.108	0.027	0.108	0.027
2015 Q2	0.147	0.029	0.147	0.029	0.143	0.027	0.143	0.027
2015 Q3	0.151	0.029	0.151	0.029	0.147	0.027	0.147	0.027
2015 Q4	0.153	0.029	0.153	0.029	0.149	0.027	0.149	0.027
2016 Q1	0.163	0.029	0.163	0.029	0.159	0.028	0.159	0.028
2016 Q2	0.178	0.030	0.178	0.030	0.174	0.028	0.174	0.028
2016 Q3	0.191	0.030	0.191	0.030	0.187	0.029	0.187	0.029
2016 Q4	0.197	0.030	0.197	0.030	0.192	0.028	0.192	0.028
2017 Q1	0.193	0.031	0.193	0.031	0.188	0.029	0.188	0.029
2017 Q2	0.200	0.032	0.200	0.032	0.194	0.030	0.194	0.030
2017 Q3	0.200	0.032	0.200	0.032	0.194	0.031	0.194	0.031
2017 Q4	0.200	0.033	0.200	0.033	0.194	0.031	0.194	0.031
2018 Q1	0.190	0.034	0.190	0.034	0.183	0.032	0.183	0.032
2018 Q2	0.200	0.035	0.200	0.035	0.194	0.033	0.194	0.033
2018 Q3	0.201	0.037	0.201	0.037	0.194	0.035	0.194	0.035
2018 Q4	0.205	0.037	0.205	0.037	0.197	0.035	0.197	0.035
2019 Q1	0.202	0.038	0.202	0.038	0.194	0.036	0.194	0.036
2019 Q2	0.206	0.039	0.206	0.039	0.198	0.037	0.198	0.037
2019 Q3	0.210	0.040	0.210	0.040	0.200	0.038	0.200	0.038
2019 Q4	0.224	0.040	0.224	0.040	0.214	0.038	0.214	0.038
2020 Q1	0.211	0.041	0.211	0.041	0.201	0.039	0.201	0.039
2020 Q2	0.191	0.042	0.191	0.042	0.183	0.040	0.183	0.040
2020 Q3	0.197	0.043	0.197	0.043	0.188	0.041	0.188	0.041
2020 Q4	0.202	0.044	0.202	0.044	0.193	0.041	0.193	0.041
2021 Q1	0.205	0.045	0.205	0.045	0.196	0.043	0.196	0.043
2021 Q2	0.201	0.046	0.201	0.046	0.193	0.044	0.193	0.044

2021 Q3	0.186	0.047	0.186	0.047	0.181	0.045	0.181	0.045
2021 Q4	0.200	0.048	0.200	0.048	0.193	0.047	0.193	0.047
N	3765477		3765477		3765477		3765477	
R-squared	0.02		0.02		0.04		0.04	

Table 10: Specification Comparisons, Employment, Women, Enrollees

Variable	Equation 2 with T		Equation 2 w/out T		Equation 3 with T		Equation 3 w/out T	
	Coeff	Std. Error	Coeff	Std. Error	Coeff	Std. Error	Coeff	Std. Error
Intercept	0.721	0.026	0.721	0.026	0.256	0.471	0.256	0.471
Treatment	-0.034	0.015			-0.034	0.015		
D -4	0.068	0.009	0.068	0.009	0.067	0.009	0.067	0.009
D -3	0.069	0.010	0.070	0.010	0.068	0.010	0.069	0.010
D -2	0.067	0.012	0.067	0.012	0.066	0.012	0.066	0.012
D -1	0.070	0.013	0.070	0.013	0.069	0.013	0.069	0.013
D 0	0.062	0.014	0.062	0.014	0.060	0.014	0.061	0.014
D 1	0.027	0.015	0.028	0.015	0.025	0.015	0.026	0.015
D 2	0.012	0.017	0.012	0.017	0.010	0.017	0.010	0.017
D 3	0.003	0.018	0.003	0.018	0.000	0.018	0.001	0.018
D 4	-0.006	0.018	-0.006	0.018	-0.008	0.018	-0.008	0.018
D 5	-0.024	0.021	-0.023	0.021	-0.026	0.020	-0.025	0.020
D 6	-0.032	0.022	-0.032	0.022	-0.034	0.022	-0.034	0.022
D 7	-0.042	0.024	-0.042	0.024	-0.044	0.023	-0.044	0.023
D 8	-0.046	0.025	-0.046	0.025	-0.048	0.025	-0.047	0.025
D 9	-0.058	0.027	-0.058	0.027	-0.060	0.027	-0.060	0.027
D 10	-0.064	0.028	-0.064	0.028	-0.066	0.028	-0.066	0.028
D 11	-0.073	0.030	-0.073	0.030	-0.075	0.030	-0.075	0.030
D 12	-0.073	0.032	-0.073	0.032	-0.075	0.032	-0.074	0.032
D -4 * Treatment	0.005	0.017	-0.029	0.016	0.005	0.017	-0.029	0.016
D -3 * Treatment	-0.002	0.020	-0.036	0.015	-0.002	0.020	-0.036	0.015
D -2 * Treatment	0.018	0.020	-0.016	0.014	0.018	0.020	-0.016	0.014
D -1 * Treatment	0.023	0.023	-0.011	0.016	0.023	0.023	-0.011	0.016
D 0 * Treatment	0.023	0.024	-0.011	0.016	0.023	0.024	-0.011	0.016
D 1 * Treatment	0.017	0.024	-0.017	0.018	0.017	0.024	-0.017	0.018
D 2 * Treatment	0.029	0.024	-0.005	0.019	0.029	0.024	-0.005	0.019
D 3 * Treatment	0.017	0.024	-0.017	0.019	0.017	0.024	-0.017	0.019

D 4 * Treatment	0.019	0.024	-0.015	0.020	0.019	0.024	-0.015	0.020
D 5 * Treatment	0.034	0.024	0.000	0.020	0.034	0.024	0.000	0.020
D 6 * Treatment	0.033	0.025	-0.001	0.020	0.033	0.025	-0.001	0.020
D 7 * Treatment	0.030	0.025	-0.004	0.020	0.030	0.025	-0.004	0.020
D 8 * Treatment	0.035	0.026	0.001	0.021	0.035	0.026	0.001	0.021
D 9 * Treatment	0.047	0.025	0.013	0.021	0.047	0.025	0.013	0.021
D 10 * Treatment	0.025	0.025	-0.009	0.021	0.025	0.025	-0.009	0.021
D 11 * Treatment	0.024	0.027	-0.010	0.022	0.024	0.027	-0.010	0.022
D 12 * Treatment	0.053	0.027	0.019	0.023	0.053	0.027	0.019	0.023
Age					0.019	0.039	0.019	0.039
Age Squared					0.000	0.001	0.000	0.001
Age Cubed					0.000	0.000	0.000	0.000
Black					0.096	0.076	0.096	0.076
Other Race					-0.015	0.119	-0.015	0.119
Two or More Races					0.128	0.105	0.128	0.105
Unknown Race					0.099	0.084	0.099	0.084
White					0.095	0.074	0.095	0.074
High School or GED					-0.104	0.068	-0.104	0.068
Masters					-0.025	0.031	-0.025	0.031
Missing Education					-0.048	0.025	-0.048	0.025
Associate or Certificate					-0.010	0.054	-0.010	0.054
Some College					0.013	0.021	0.013	0.021
2011 Q3	0.012	0.023	0.012	0.023	0.013	0.022	0.013	0.022
2011 Q4	0.016	0.022	0.016	0.022	0.017	0.022	0.017	0.022
2012 Q1	0.020	0.023	0.020	0.023	0.027	0.023	0.027	0.023
2012 Q2	0.032	0.025	0.032	0.025	0.043	0.024	0.043	0.024
2012 Q3	0.038	0.025	0.038	0.025	0.050	0.024	0.050	0.024
2012 Q4	0.045	0.025	0.045	0.025	0.057	0.024	0.057	0.024
2013 Q1	0.045	0.026	0.045	0.026	0.059	0.025	0.059	0.025
2013 Q2	0.050	0.026	0.050	0.026	0.063	0.026	0.063	0.026
2013 Q3	0.056	0.026	0.056	0.026	0.071	0.026	0.071	0.026

2013 Q4	0.065	0.026	0.065	0.026	0.079	0.026	0.079	0.026
2014 Q1	0.036	0.026	0.036	0.026	0.049	0.026	0.049	0.026
2014 Q2	0.064	0.026	0.064	0.026	0.077	0.026	0.077	0.026
2014 Q3	0.051	0.027	0.051	0.027	0.063	0.026	0.063	0.026
2014 Q4	0.083	0.027	0.083	0.027	0.095	0.027	0.095	0.027
2015 Q1	0.052	0.028	0.052	0.028	0.065	0.027	0.065	0.027
2015 Q2	0.082	0.029	0.082	0.029	0.095	0.028	0.095	0.028
2015 Q3	0.081	0.029	0.081	0.029	0.094	0.028	0.094	0.028
2015 Q4	0.091	0.029	0.091	0.029	0.104	0.028	0.104	0.028
2016 Q1	0.096	0.029	0.096	0.029	0.109	0.028	0.109	0.028
2016 Q2	0.102	0.029	0.102	0.029	0.115	0.029	0.115	0.029
2016 Q3	0.119	0.030	0.119	0.030	0.132	0.029	0.132	0.029
2016 Q4	0.123	0.030	0.123	0.030	0.136	0.029	0.136	0.029
2017 Q1	0.114	0.031	0.114	0.031	0.127	0.030	0.127	0.030
2017 Q2	0.121	0.032	0.121	0.032	0.135	0.031	0.135	0.031
2017 Q3	0.116	0.033	0.116	0.033	0.130	0.032	0.130	0.032
2017 Q4	0.131	0.033	0.131	0.033	0.145	0.033	0.145	0.033
2018 Q1	0.125	0.034	0.125	0.034	0.139	0.034	0.139	0.034
2018 Q2	0.127	0.035	0.127	0.035	0.141	0.035	0.141	0.035
2018 Q3	0.123	0.037	0.123	0.037	0.138	0.037	0.138	0.037
2018 Q4	0.130	0.038	0.130	0.038	0.147	0.038	0.147	0.038
2019 Q1	0.121	0.040	0.121	0.040	0.138	0.039	0.138	0.039
2019 Q2	0.130	0.040	0.130	0.040	0.146	0.039	0.146	0.039
2019 Q3	0.135	0.041	0.135	0.041	0.150	0.041	0.150	0.041
2019 Q4	0.153	0.042	0.153	0.042	0.167	0.042	0.167	0.042
2020 Q1	0.128	0.043	0.128	0.043	0.143	0.043	0.143	0.043
2020 Q2	0.111	0.045	0.111	0.045	0.124	0.045	0.124	0.045
2020 Q3	0.113	0.046	0.113	0.046	0.127	0.046	0.127	0.046
2020 Q4	0.134	0.047	0.134	0.047	0.146	0.047	0.146	0.047
2021 Q1	0.130	0.048	0.130	0.048	0.142	0.048	0.142	0.048
2021 Q2	0.130	0.050	0.130	0.050	0.142	0.050	0.142	0.050

2021 Q3	0.119	0.053	0.119	0.053	0.132	0.053	0.132	0.053
2021 Q4	0.154	0.053	0.154	0.053	0.169	0.053	0.169	0.053
N	1437045		1437045		1437045		1437045	
R-squared	0.015		0.015		0.026		0.026	

Appendix Table 11: Heterogeneity by Education, Men, Enrollees

Variable	Earnings		Log-Earnings		Employment	
	Coeff	Std. Error	Coeff	Std. Error	Coeff	Std. Error
D -4	-67.558	47.208	0.001	0.008	0.023	0.003
D -3	-46.653	54.373	-0.002	0.011	0.015	0.004
D -2	-21.449	66.972	-0.005	0.011	0.006	0.006
D -1	-51.901	66.844	-0.007	0.013	0.000	0.007
D 0	136.299	77.466	0.000	0.013	-0.025	0.008
D 1	268.467	89.647	0.001	0.015	-0.060	0.008
D 2	348.347	109.914	-0.002	0.017	-0.086	0.008
D 3	282.076	110.475	-0.008	0.019	-0.112	0.009
D 4	324.697	129.285	-0.011	0.022	-0.136	0.010
D 5	441.989	135.167	-0.017	0.024	-0.161	0.011
D 6	555.096	157.876	-0.011	0.026	-0.178	0.011
D 7	515.298	173.892	-0.030	0.028	-0.200	0.012
D 8	545.792	182.610	-0.028	0.032	-0.223	0.012
D 9	614.063	193.999	-0.037	0.034	-0.238	0.013
D 10	698.368	224.799	-0.042	0.037	-0.252	0.014
D 11	710.611	246.166	-0.054	0.040	-0.272	0.015
D 12	783.184	252.237	-0.066	0.043	-0.291	0.016
D -4 * Treatment	-648.030	234.147	-0.127	0.036	0.011	0.022
D -3 * Treatment	-1169.276	287.825	-0.222	0.048	0.006	0.024
D -2 * Treatment	-959.729	353.538	-0.172	0.044	0.014	0.026
D -1 * Treatment	-1488.229	364.870	-0.282	0.051	0.039	0.026
D 0 * Treatment	-1259.977	231.661	-0.186	0.039	-0.009	0.019
D 1 * Treatment	-1426.420	337.353	-0.211	0.039	0.029	0.027
D 2 * Treatment	-1101.874	412.019	-0.153	0.042	0.038	0.027
D 3 * Treatment	-1365.627	432.024	-0.165	0.045	0.080	0.027
D 4 * Treatment	-689.210	410.858	-0.135	0.053	0.071	0.028
D 5 * Treatment	-1261.207	437.513	-0.201	0.057	0.093	0.028
D 6 * Treatment	-1213.975	479.959	-0.188	0.052	0.077	0.028
D 7 * Treatment	-1291.729	433.939	-0.182	0.052	0.066	0.030
D 8 * Treatment	-416.641	498.986	-0.151	0.055	0.064	0.031
D 9 * Treatment	-1139.079	462.191	-0.176	0.047	0.075	0.030
D 10 * Treatment	-1255.423	476.049	-0.211	0.053	0.067	0.030
D 11 * Treatment	-1482.356	534.241	-0.212	0.059	0.077	0.030
D 12 * Treatment	-910.565	574.865	-0.221	0.067	0.077	0.030
Age	920.911	202.028	0.458	0.026	0.060	0.014
Age Squared	-16.116	5.334	-0.011	0.001	-0.002	0.000
Age Cubed	0.046	0.044	0.000	0.000	0.000	0.000
D -4*Treatment *BA	933.799	394.054	0.185	0.101	-0.021	0.038
D-4*Treatment*HS	-48.901	415.255	-0.160	0.240	0.002	0.053

D-4*Treatment*MA	1848.734	737.163	0.232	0.082	-0.046	0.049
D -4*Treatment*Assoc	906.578	425.808	0.162	0.091	-0.051	0.048
D -4*Treatment *SC	357.667	324.388	0.096	0.067	-0.016	0.030
D -3*Treatment *BA	1608.211	447.886	0.401	0.096	-0.017	0.039
D-3*Treatment*HS	1022.315	482.995	0.231	0.164	0.068	0.063
D-3*Treatment*MA	1131.173	859.755	0.198	0.109	-0.092	0.065
D -3*Treatment*Assoc	1333.735	482.254	0.099	0.168	-0.030	0.054
D -3*Treatment *SC	1147.820	360.232	0.283	0.069	-0.038	0.034
D -2*Treatment *BA	1554.781	481.832	0.383	0.092	0.008	0.040
D-2*Treatment*HS	1155.544	641.290	0.298	0.159	-0.076	0.077
D-2*Treatment*MA	344.926	1050.324	0.034	0.119	-0.034	0.052
D -2*Treatment*Assoc	915.038	511.737	0.209	0.086	-0.092	0.055
D -2*Treatment *SC	696.252	441.935	0.174	0.070	-0.041	0.036
D -1*Treatment *BA	2174.486	477.975	0.462	0.099	-0.028	0.042
D-1*Treatment*HS	1428.244	682.077	0.206	0.198	-0.221	0.080
D-1*Treatment*MA	2728.314	1034.558	0.263	0.101	-0.153	0.070
D -1*Treatment*Assoc	1364.694	524.824	0.287	0.111	-0.070	0.056
D -1*Treatment *SC	677.055	429.243	0.158	0.084	-0.006	0.034
D 0*Treatment *BA	1795.895	434.110	0.384	0.094	0.023	0.036
D 0*Treatment*HS	17.041	100.276	0.001	0.014	0.012	0.008
D 0*Treatment*MA	550.546	1153.073	-0.055	0.159	-0.121	0.064
D 0*Treatment*Assoc	1139.878	445.158	0.164	0.147	-0.041	0.042
D 0*Treatment *SC	-10.743	71.545	0.012	0.010	0.043	0.005
D 1*Treatment *BA	1936.114	556.490	0.390	0.091	0.022	0.042
D 1*Treatment*HS	534.324	743.269	0.052	0.178	-0.137	0.077
D 1*Treatment*MA	1145.905	787.324	0.143	0.101	-0.159	0.070
D 1*Treatment*Assoc	1128.425	471.951	0.258	0.115	-0.084	0.066
D 1*Treatment *SC	985.019	427.268	0.197	0.064	0.020	0.035
D 2*Treatment *BA	1684.516	571.232	0.394	0.090	0.042	0.040
D 2*Treatment*HS	144.895	821.757	0.199	0.157	-0.110	0.081
D 2*Treatment*MA	1070.996	915.772	0.098	0.125	-0.153	0.067
D 2*Treatment*Assoc	685.663	767.685	0.235	0.156	-0.026	0.053
D 2*Treatment *SC	728.785	468.892	0.178	0.072	-0.010	0.037
D 3*Treatment *BA	2713.987	571.550	0.460	0.095	-0.020	0.042
D 3*Treatment*HS	245.822	770.977	0.063	0.178	-0.117	0.079
D 3*Treatment*MA	2248.458	921.909	0.140	0.115	-0.161	0.071
D 3*Treatment*Assoc	1145.137	745.081	0.303	0.146	-0.055	0.053
D 3*Treatment *SC	1047.901	506.930	0.238	0.065	-0.039	0.037
D 4*Treatment *BA	2346.372	568.418	0.469	0.088	-0.028	0.046
D 4*Treatment*HS	-647.006	793.864	-0.017	0.215	-0.049	0.075
D 4*Treatment*MA	2834.186	1216.550	0.207	0.113	-0.163	0.071
D 4*Treatment*Assoc	317.832	770.788	0.185	0.209	-0.034	0.052
D 4*Treatment *SC	684.166	494.338	0.219	0.071	-0.007	0.038

D 5*Treatment *BA	2684.242	592.260	0.506	0.098	-0.045	0.048
D 5*Treatment*HS	446.346	779.041	0.242	0.208	-0.082	0.074
D 5*Treatment*MA	1699.836	1232.514	0.136	0.146	-0.131	0.066
D 5*Treatment*Assoc	1478.415	712.083	0.371	0.120	-0.071	0.065
D 5*Treatment *SC	1254.560	522.292	0.264	0.080	-0.046	0.037
D 6*Treatment *BA	2343.035	631.303	0.428	0.101	-0.023	0.048
D 6*Treatment*HS	259.714	840.546	0.204	0.207	-0.105	0.079
D 6*Treatment*MA	2724.395	924.788	0.260	0.103	-0.110	0.066
D 6*Treatment*Assoc	981.992	807.047	0.373	0.132	-0.050	0.047
D 6*Treatment *SC	945.565	541.081	0.304	0.067	-0.020	0.038
D 7*Treatment *BA	3259.529	692.395	0.542	0.099	-0.017	0.050
D 7*Treatment*HS	106.085	816.582	0.209	0.178	-0.081	0.083
D 7*Treatment*MA	3430.161	1004.354	0.333	0.109	-0.130	0.070
D 7*Treatment*Assoc	2217.006	868.781	0.359	0.150	-0.059	0.062
D 7*Treatment *SC	1365.205	521.889	0.299	0.078	-0.017	0.041
D 8*Treatment *BA	2294.550	682.777	0.553	0.094	0.006	0.049
D 8*Treatment*HS	-841.401	821.588	0.189	0.173	-0.069	0.087
D 8*Treatment*MA	3696.121	1368.655	0.295	0.137	-0.070	0.067
D 8*Treatment*Assoc	987.458	942.001	0.288	0.168	-0.072	0.060
D 8*Treatment *SC	847.479	599.310	0.299	0.080	-0.018	0.043
D 9*Treatment *BA	3266.245	696.535	0.501	0.105	0.006	0.047
D 9*Treatment*HS	899.023	769.174	0.337	0.162	-0.054	0.088
D 9*Treatment*MA	3677.083	1145.720	0.334	0.113	-0.100	0.071
D 9*Treatment*Assoc	841.469	965.867	0.281	0.130	-0.050	0.048
D 9*Treatment *SC	1433.907	570.763	0.272	0.078	-0.016	0.042
D 10*Treatment *BA	3023.538	688.662	0.542	0.102	0.033	0.047
D 10*Treatment*HS	-159.018	870.652	0.293	0.137	0.002	0.085
D 10*Treatment*MA	3960.317	957.928	0.362	0.103	-0.089	0.071
D 10*Treatment*Assoc	1023.304	1149.771	0.283	0.143	-0.150	0.057
D 10*Treatment *SC	1443.529	563.342	0.348	0.077	-0.044	0.042
D 11*Treatment *BA	4126.278	759.119	0.668	0.098	-0.008	0.048
D 11*Treatment*HS	461.155	837.777	0.545	0.131	0.010	0.086
D 11*Treatment*MA	6264.970	1443.522	0.472	0.116	-0.098	0.071
D 11*Treatment*Assoc	2360.174	1194.562	0.434	0.149	-0.139	0.063
D 11*Treatment *SC	1895.378	708.245	0.337	0.083	-0.043	0.044
D 12*Treatment *BA	3266.796	839.112	0.623	0.110	0.014	0.048
D 12*Treatment*HS	661.175	941.836	0.631	0.174	0.086	0.084
D 12*Treatment*MA	5557.955	1747.584	0.448	0.122	-0.104	0.072
D 12*Treatment*Assoc	1488.135	1029.108	0.333	0.213	-0.071	0.058
D 12*Treatment *SC	1472.157	754.864	0.396	0.092	-0.042	0.045
2011 Q3	178.725	228.055	0.057	0.042	0.028	0.014
2011 Q4	449.445	220.830	0.095	0.041	0.026	0.015
2012 Q1	394.938	232.592	0.074	0.043	0.034	0.016

2012 Q2	640.210	242.846	0.130	0.044	0.068	0.017
2012 Q3	640.641	254.795	0.162	0.046	0.098	0.017
2012 Q4	1180.211	256.667	0.217	0.047	0.096	0.018
2013 Q1	1053.817	264.230	0.178	0.048	0.095	0.018
2013 Q2	1165.195	261.578	0.232	0.048	0.129	0.018
2013 Q3	1145.458	262.490	0.255	0.048	0.147	0.017
2013 Q4	1668.860	266.812	0.313	0.049	0.143	0.018
2014 Q1	1644.219	269.695	0.283	0.049	0.132	0.018
2014 Q2	1685.490	264.799	0.331	0.049	0.173	0.017
2014 Q3	1842.352	262.486	0.359	0.050	0.182	0.018
2014 Q4	2494.756	267.050	0.441	0.049	0.202	0.018
2015 Q1	2350.331	268.607	0.400	0.049	0.187	0.018
2015 Q2	2730.663	261.978	0.486	0.048	0.234	0.018
2015 Q3	2683.550	260.872	0.502	0.048	0.244	0.019
2015 Q4	3990.812	268.835	0.645	0.049	0.250	0.018
2016 Q1	2952.472	266.516	0.523	0.048	0.267	0.019
2016 Q2	3385.239	266.037	0.598	0.049	0.290	0.019
2016 Q3	3839.281	270.182	0.664	0.049	0.313	0.019
2016 Q4	4113.220	270.905	0.705	0.049	0.324	0.019
2017 Q1	4117.259	280.965	0.677	0.050	0.330	0.019
2017 Q2	4145.056	274.755	0.717	0.051	0.349	0.020
2017 Q3	3906.430	276.542	0.705	0.051	0.361	0.020
2017 Q4	4704.346	286.596	0.792	0.052	0.369	0.020
2018 Q1	4792.748	301.370	0.768	0.053	0.371	0.021
2018 Q2	4788.129	294.723	0.804	0.054	0.396	0.022
2018 Q3	4559.467	292.834	0.801	0.054	0.405	0.022
2018 Q4	5470.989	312.577	0.891	0.056	0.419	0.022
2019 Q1	5625.011	345.802	0.870	0.058	0.426	0.023
2019 Q2	5538.540	326.068	0.912	0.059	0.441	0.024
2019 Q3	5456.267	333.460	0.922	0.060	0.452	0.024
2019 Q4	6593.836	352.999	1.023	0.062	0.479	0.025
2020 Q1	6485.412	388.270	0.982	0.065	0.477	0.026
2020 Q2	5451.889	376.689	0.848	0.067	0.468	0.027
2020 Q3	6178.078	381.611	0.981	0.068	0.483	0.027
2020 Q4	7785.576	421.310	1.120	0.070	0.498	0.028
2021 Q1	6649.195	452.980	1.021	0.073	0.512	0.029
2021 Q2	7111.323	448.581	1.099	0.077	0.525	0.030
2021 Q3	7460.991	467.790	1.180	0.080	0.537	0.030
2021 Q4	8908.218	521.998	1.296	0.084	0.554	0.031
N	2916288		2916288		3765477	
within R-squared	0.143		0.108		0.034	

Appendix Table 12: Heterogeneity by Education, Women, Enrollees

Variable	Earnings		Log-Earnings		Employment	
	Coeff	Std. Error	Coeff	Std. Error	Coeff	Std. Error
D -4	-97.962	115.025	-0.029	0.012	0.022	0.004
D -3	-175.498	89.224	-0.054	0.018	0.016	0.006
D -2	-146.456	78.755	-0.037	0.015	0.007	0.006
D -1	-170.714	84.930	-0.041	0.017	0.001	0.008
D 0	-186.964	138.455	-0.045	0.021	-0.015	0.010
D 1	-48.318	128.305	-0.014	0.022	-0.057	0.010
D 2	-22.467	133.350	-0.011	0.024	-0.081	0.010
D 3	41.218	141.889	-0.013	0.026	-0.098	0.011
D 4	-55.463	197.356	-0.030	0.031	-0.116	0.013
D 5	5.196	191.679	-0.027	0.033	-0.141	0.014
D 6	-3.818	197.542	-0.028	0.035	-0.156	0.015
D 7	-24.269	218.558	-0.031	0.038	-0.175	0.016
D 8	134.705	261.966	-0.035	0.042	-0.187	0.017
D 9	129.182	241.202	-0.025	0.045	-0.208	0.019
D 10	-76.070	256.771	-0.045	0.047	-0.221	0.020
D 11	-62.467	280.923	-0.066	0.053	-0.236	0.021
D 12	71.434	329.597	-0.062	0.056	-0.248	0.023
D -4 * Treatment	93.813	279.192	-0.024	0.055	0.059	0.027
D -3 * Treatment	-186.145	317.073	-0.073	0.078	0.042	0.031
D -2 * Treatment	-419.641	347.979	-0.094	0.066	0.049	0.032
D -1 * Treatment	-926.185	419.570	-0.190	0.079	0.051	0.042
D 0 * Treatment	-697.425	347.875	-0.084	0.053	-0.010	0.032
D 1 * Treatment	-999.384	415.933	-0.221	0.076	0.036	0.040
D 2 * Treatment	-	-	-	-	-	-
D 2 * Treatment	1178.273	519.248	-0.260	0.078	0.034	0.039
D 3 * Treatment	1075.583	518.491	-0.214	0.071	0.012	0.040
D 4 * Treatment	-680.842	920.930	-0.290	0.093	-0.021	0.040
D 5 * Treatment	-960.619	508.336	-0.228	0.082	-0.009	0.042
D 6 * Treatment	-318.399	579.904	-0.135	0.069	0.005	0.042
D 7 * Treatment	-969.553	694.646	-0.195	0.068	0.017	0.041
D 8 * Treatment	93.966	1119.360	-0.137	0.083	0.003	0.044
D 9 * Treatment	-175.608	618.279	-0.199	0.111	0.012	0.043
D 10 * Treatment	-185.282	597.652	-0.096	0.076	0.014	0.041
D 11 * Treatment	187.156	968.657	-0.095	0.079	-0.002	0.044
D 12 * Treatment	263.230	988.265	-0.096	0.074	0.025	0.043
Age	1354.681	462.265	0.463	0.085	-0.002	0.023
Age Squared	-31.463	11.764	-0.011	0.002	-0.001	0.001
Age Cubed	0.194	0.097	0.000	0.000	0.000	0.000
D -4*Treatment *BA	567.201	544.733	0.082	0.140	-0.043	0.042

D-4*Treatment*HS	490.618	1935.818	-0.417	0.507	-0.054	0.061
D-4*Treatment*MA	415.631	912.064	0.139	0.158	-0.123	0.052
	-					
D -4*Treatment* Assoc	1490.068	1034.856	-0.331	0.371	-0.015	0.092
D -4*Treatment *SC	-257.391	460.063	0.052	0.101	-0.120	0.049
D -3*Treatment *BA	335.573	535.910	0.014	0.167	-0.013	0.048
D-3*Treatment*HS	2770.066	912.140	0.758	0.241	-0.187	0.113
D-3*Treatment*MA	1833.246	930.135	0.344	0.139	-0.093	0.067
D -3*Treatment* Assoc	620.737	645.373	0.210	0.157	-0.196	0.153
D -3*Treatment *SC	78.632	414.491	0.152	0.101	-0.090	0.049
D -2*Treatment *BA	992.923	506.054	0.174	0.106	-0.042	0.056
D-2*Treatment*HS	528.867	1289.450	-0.108	0.768	-0.047	0.163
D-2*Treatment*MA	856.740	895.377	0.054	0.184	0.018	0.071
D -2*Treatment* Assoc	1368.316	783.586	0.158	0.292	-0.109	0.122
D -2*Treatment *SC	-93.951	477.603	-0.012	0.143	-0.086	0.049
D -1*Treatment *BA	1635.821	581.342	0.337	0.118	-0.113	0.069
D-1*Treatment*HS	-879.989	2107.859	-1.171	0.768	-0.203	0.117
D-1*Treatment*MA	2379.577	878.256	0.312	0.166	0.079	0.076
D -1*Treatment* Assoc	2116.187	735.407	0.484	0.193	-0.205	0.083
D -1*Treatment *SC	-53.291	540.347	-0.013	0.132	-0.011	0.052
D 0*Treatment *BA	1568.703	629.460	0.141	0.139	0.016	0.058
D 0*Treatment*HS	-91.777	133.809	-0.033	0.021	-0.021	0.013
D 0*Treatment*MA	1396.648	888.340	0.184	0.159	0.216	0.061
D 0*Treatment* Assoc	1572.746	821.270	0.222	0.109	-0.140	0.079
D 0*Treatment *SC	26.460	85.922	0.026	0.016	0.037	0.008
D 1*Treatment *BA	1739.043	644.082	0.380	0.119	-0.013	0.061
D 1*Treatment*HS	809.048	1835.630	-0.625	0.823	-0.297	0.164
D 1*Treatment*MA	2497.276	824.864	0.482	0.132	0.106	0.074
D 1*Treatment* Assoc	996.866	1461.264	0.048	0.523	-0.153	0.082
D 1*Treatment *SC	1036.295	582.806	0.265	0.133	-0.077	0.057
D 2*Treatment *BA	2106.064	691.424	0.447	0.109	-0.023	0.062
D 2*Treatment*HS	2228.123	1813.362	0.369	0.259	-0.276	0.164
D 2*Treatment*MA	2473.109	925.886	0.500	0.145	0.190	0.073
D 2*Treatment* Assoc	1278.268	1031.312	0.281	0.280	-0.146	0.155
D 2*Treatment *SC	1214.274	631.185	0.323	0.122	-0.052	0.058
D 3*Treatment *BA	1988.695	731.451	0.416	0.111	-0.019	0.062
D 3*Treatment*HS	375.197	2072.538	-0.176	0.407	-0.250	0.163
D 3*Treatment*MA	2850.221	846.637	0.532	0.129	0.194	0.079
D 3*Treatment* Assoc	4591.313	2019.495	0.563	0.272	-0.113	0.154
D 3*Treatment *SC	950.291	634.355	0.325	0.125	-0.023	0.058
D 4*Treatment *BA	2279.166	1152.466	0.493	0.138	0.036	0.064
D 4*Treatment*HS	-245.182	1547.823	-0.481	0.714	-0.063	0.118
D 4*Treatment*MA	2791.182	1240.330	0.601	0.146	0.261	0.080

D 4*Treatment*Assoc	14.851	1158.981	0.346	0.144	-0.160	0.176
D 4*Treatment *SC	1144.255	1000.881	0.532	0.129	0.033	0.058
D 5*Treatment *BA	2249.797	774.740	0.404	0.143	0.062	0.062
D 5*Treatment*HS	2677.962	2562.477	0.053	0.469	-0.211	0.163
D 5*Treatment*MA	3551.315	976.443	0.601	0.146	0.264	0.079
D 5*Treatment*Assoc	-828.804	1481.570	-0.498	0.766	-0.154	0.118
D 5*Treatment *SC	1555.541	674.384	0.398	0.122	0.032	0.056
D 6*Treatment *BA	1699.415	782.193	0.315	0.132	0.017	0.063
D 6*Treatment*HS	-566.633	2741.353	-0.825	0.808	-0.357	0.183
D 6*Treatment*MA	2900.609	1032.360	0.410	0.178	0.281	0.075
D 6*Treatment*Assoc	118.426	1666.597	-0.104	0.274	-0.440	0.148
D 6*Treatment *SC	236.856	671.620	0.226	0.119	0.048	0.060
D 7*Treatment *BA	1796.714	890.053	0.321	0.148	0.016	0.064
D 7*Treatment*HS	2968.319	1409.371	0.248	0.252	-0.364	0.179
D 7*Treatment*MA	4186.390	1019.868	0.618	0.123	0.232	0.077
D 7*Treatment*Assoc	838.082	992.263	0.176	0.164	-0.439	0.158
D 7*Treatment *SC	788.739	777.459	0.324	0.110	0.013	0.060
D 8*Treatment *BA	1018.140	1277.694	0.274	0.152	0.063	0.067
-	-	-	-	-	-	-
D 8*Treatment*HS	2481.881	2209.376	-0.838	0.527	-0.054	0.149
D 8*Treatment*MA	3377.764	1453.344	0.588	0.138	0.275	0.080
D 8*Treatment*Assoc	4637.666	3335.178	0.301	0.226	-0.513	0.148
D 8*Treatment *SC	-524.526	1200.975	0.204	0.138	0.010	0.061
D 9*Treatment *BA	1710.307	879.873	0.366	0.189	0.051	0.066
-	-	-	-	-	-	-
D 9*Treatment*HS	1907.655	2054.386	-0.348	0.551	0.088	0.070
D 9*Treatment*MA	3691.077	1035.654	0.639	0.158	0.251	0.079
-	-	-	-	-	-	-
D 9*Treatment*Assoc	3145.839	1797.431	-0.362	0.297	-0.330	0.151
D 9*Treatment *SC	-19.193	868.521	0.276	0.156	0.010	0.060
D 10*Treatment *BA	2740.253	841.311	0.489	0.115	0.014	0.065
D 10*Treatment*HS	-320.181	1879.258	-0.009	0.391	-0.184	0.190
D 10*Treatment*MA	3827.638	1230.851	0.517	0.157	0.250	0.078
D 10*Treatment*Assoc	2034.654	1106.306	0.233	0.144	-0.338	0.136
D 10*Treatment *SC	572.845	744.233	0.254	0.131	-0.035	0.061
D 11*Treatment *BA	1426.379	1185.859	0.370	0.124	0.011	0.072
-	-	-	-	-	-	-
D 11*Treatment*HS	1905.857	2547.350	-0.392	0.560	-0.019	0.152
D 11*Treatment*MA	3764.962	1297.613	0.582	0.135	0.301	0.076
-	-	-	-	-	-	-
D 11*Treatment*Assoc	3574.763	2620.149	-0.944	0.794	-0.331	0.145
D 11*Treatment *SC	214.382	1088.611	0.235	0.137	-0.009	0.064
D 12*Treatment *BA	4359.159	2889.251	0.509	0.129	0.021	0.071
-	-	-	-	-	-	-
D 12*Treatment*HS	1780.015	1823.914	-0.853	1.067	-0.041	0.150

D 12*Treatment*MA	5593.239	1727.727	0.733	0.147	0.272	0.078
D 12*Treatment*Assoc	2169.051	1854.791	0.549	0.335	-0.279	0.206
D 12*Treatment *SC	-455.788	1108.067	0.202	0.130	-0.012	0.066
2011 Q3	-200.869	278.455	0.012	0.068	0.021	0.013
2011 Q4	1.584	238.710	0.041	0.068	0.024	0.015
2012 Q1	96.343	270.316	0.029	0.067	0.034	0.017
2012 Q2	446.999	279.887	0.059	0.075	0.055	0.016
2012 Q3	56.863	287.537	0.015	0.076	0.063	0.017
2012 Q4	372.515	281.753	0.100	0.076	0.071	0.016
2013 Q1	656.080	284.940	0.102	0.076	0.075	0.018
2013 Q2	797.910	283.565	0.147	0.078	0.101	0.018
2013 Q3	355.389	282.047	0.106	0.079	0.115	0.018
2013 Q4	907.429	282.336	0.189	0.079	0.124	0.018
2014 Q1	1087.903	338.201	0.171	0.083	0.098	0.019
2014 Q2	1158.507	300.616	0.200	0.083	0.135	0.019
2014 Q3	732.651	290.460	0.181	0.083	0.137	0.019
2014 Q4	1419.561	291.274	0.290	0.083	0.171	0.019
2015 Q1	1619.119	305.825	0.270	0.084	0.152	0.018
2015 Q2	2070.349	298.099	0.348	0.081	0.187	0.019
2015 Q3	1452.416	288.358	0.298	0.081	0.190	0.019
2015 Q4	2799.737	294.995	0.459	0.081	0.204	0.019
2016 Q1	1804.849	288.257	0.341	0.080	0.213	0.019
2016 Q2	2780.047	307.935	0.446	0.081	0.226	0.019
2016 Q3	2367.489	298.729	0.418	0.081	0.250	0.019
2016 Q4	2978.812	302.653	0.503	0.080	0.258	0.019
2017 Q1	2832.486	302.773	0.470	0.081	0.258	0.019
2017 Q2	3537.086	330.659	0.531	0.081	0.276	0.020
2017 Q3	2275.586	310.778	0.426	0.081	0.281	0.022
2017 Q4	3550.054	321.176	0.579	0.081	0.303	0.022
2018 Q1	3389.162	326.379	0.539	0.081	0.307	0.023
2018 Q2	4173.084	361.379	0.622	0.082	0.320	0.024
2018 Q3	2815.783	330.320	0.497	0.082	0.326	0.024
2018 Q4	4299.034	358.866	0.667	0.082	0.342	0.025
2019 Q1	4340.809	370.046	0.647	0.083	0.341	0.026
2019 Q2	5051.916	406.835	0.713	0.085	0.360	0.027
2019 Q3	3471.335	380.225	0.579	0.086	0.372	0.028
2019 Q4	5162.353	411.457	0.752	0.087	0.399	0.029
2020 Q1	5159.680	511.986	0.709	0.089	0.383	0.029
2020 Q2	5120.541	494.140	0.596	0.095	0.375	0.030
2020 Q3	4186.652	474.982	0.600	0.094	0.375	0.031
2020 Q4	6473.851	557.371	0.819	0.094	0.399	0.032
2021 Q1	5708.993	653.664	0.742	0.097	0.404	0.033
2021 Q2	6624.545	554.247	0.852	0.099	0.416	0.034

2021 Q3	5557.657	495.587	0.796	0.100	0.426	0.035
2021 Q4	7978.073	575.997	1.012	0.112	0.458	0.036
N	1437045		1437045		1816753	
within R-squared	0.108		0.063		0.025	